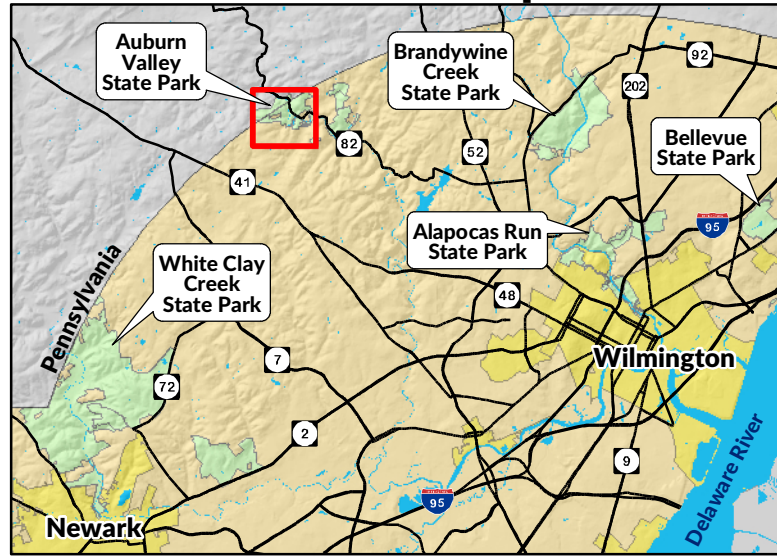


# Auburn Valley State Park

## Location Map



## Legend

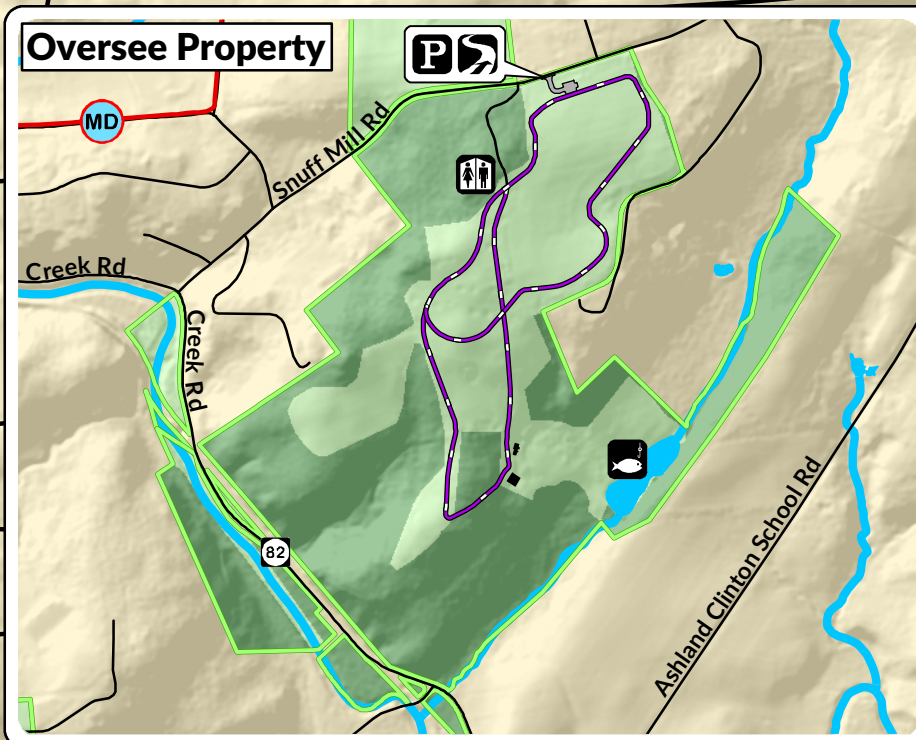
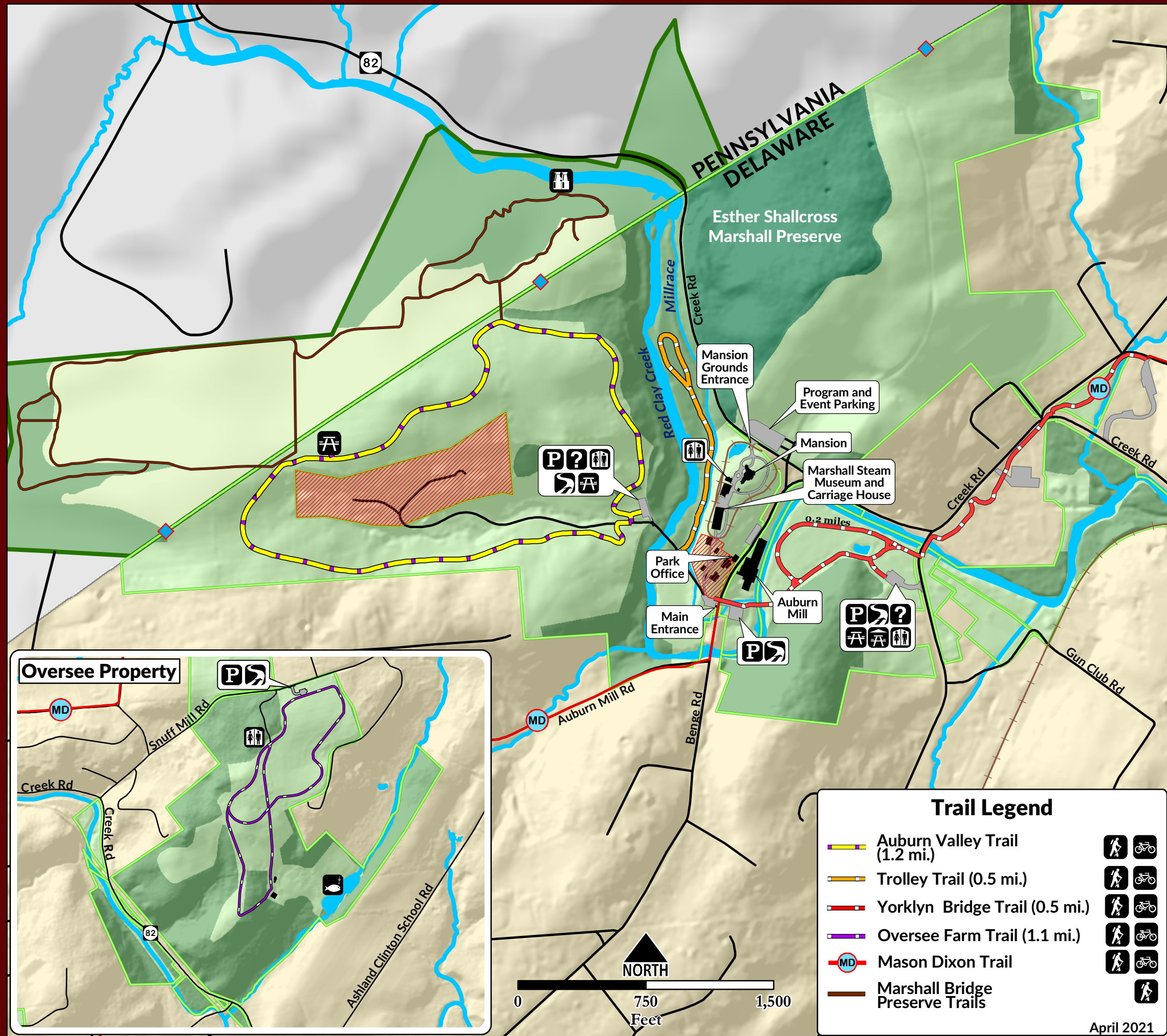
- |  |                                     |  |                 |
|--|-------------------------------------|--|-----------------|
|  | State Park Land                     |  | Parking         |
|  | Marshall Bridge Preserve (PA)       |  | Restrooms       |
|  | Esther Shallcross Marshall Preserve |  | Information     |
|  | Forested Lands                      |  | Trail Head      |
|  | Water                               |  | Picnic Pavilion |
|  | Buildings                           |  | Picnic Table    |
|  | Parking                             |  | Fishing         |
|  | Restricted Area                     |  | Bird Blind      |
|  | Municipalities                      |  | Hiking          |
|  | Railroad                            |  | Biking          |
|  | Boundary Marker                     |  |                 |

## Park Information

Park Office: (302) 729-4280  
 630 Benge Road  
 Auburn Heights Mansion  
 3000 Creek Road, P.O. Box 36  
 Yorklyn, DE 19736  
[www.destateparks.com](http://www.destateparks.com)



**DELAWARE STATE PARKS**  
 YOUR OUTDOOR ADVENTURE STARTS HERE



### Trail Legend

	Auburn Valley Trail (1.2 mi.)	
	Trolley Trail (0.5 mi.)	
	Yorklyn Bridge Trail (0.5 mi.)	
	Oversee Farm Trail (1.1 mi.)	
	Mason Dixon Trail	
	Marshall Bridge Preserve Trails	

