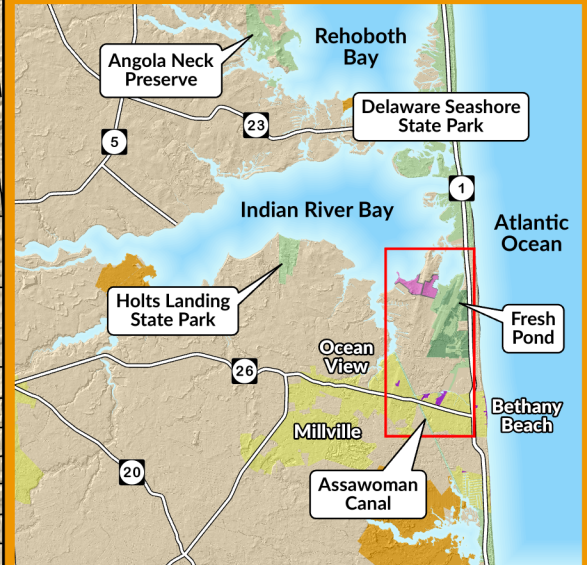


Assawoman Canal Trail

Location Map



Legend

- | | |
|--------------------------------|------------------|
| State Park Land | Parking |
| Forested Park Land | Restrooms |
| Water | Information |
| Municipalities | Trail Head |
| Municipal Parks | Picnic Pavilion |
| James Farm Ecological Preserve | Playground |
| Fish & Wildlife Lands | Scenic Overlook |
| | Horseback Riding |
| | Kayak Launch |

Trails

- | | | | |
|---|--------------------------------|--|--|
| Assawoman Canal Trail (1.0 mi.) | Pathways | | |
| Fred Hudson Road Trail (1.0 mi.) | Connector | | |
| Fred Hudson Road Pathway (0.8 mi.) | Prickly Pear Trail Cut-Off | | |
| Prickly Pear Trail (Packed Earth - 2.5 mi.) | Municipal Trails | | |
| Prickly Pear Trail (Crushed Stone with Fines - 1.0 mi.) | James Farm Ecological Preserve | | |

Updated: October 2021

About the Trail ...

The Assawoman Canal Trail parallels a portion of the three mile long canal that was dug by hand in the 1890's to connect the Indian River Bay with Little Assawoman Bay to the South. The eight foot wide crushed stone multi-use trail is accessible from the trailhead located off Town Road. Users can also enter the trail at the intersections of Route 26 and Central Avenue or off of Osprey Lane; however, parking is not available at these locations.

Contact Information

39415 Inlet Road, Rehoboth Beach, DE 19971
 Park Office: (302) 227-2800
www.destateparks.com



DELAWARE STATE PARKS
 YOUR OUTDOOR ADVENTURE STARTS HERE

