

Killens Pond State Park

2023–24 Hunting Seasons/Hunting Rules

Refer to map for approximate locations of indicated areas.

1. In addition to the rules and regulations found in the “Delaware Hunting and Trapping Guide: 2023-2024”, specific rules that apply to Killens Pond State Park are listed below. Registration of all hunters participating in the Delaware State Park Hunting Program is required. There is an annual \$10 Hunting Permit that must be purchased for hunters 16-64 years of age. This charge is waived for Delaware hunters age 65 or over and Youth Hunters ages 13-15 years of age. Hunters may purchase this permit at the Killens Pond State Park Office or at any Delaware State Park where hunting is permitted. You must have this permit prior to hunting.
2. If you plan to hunt at Killens Pond State Park, regardless of where you purchase your State Park Hunting Permit, you must appear in person at the Killens Pond State Park office during business hours prior to hunting to sign the hunting registration form. The park office is open daily April 1 – October 31, 8 am to 4 pm, and Weekdays November 1 to March 31, 8 am to 4 pm.
3. General State Park Hunting Rules
 - a. There is **No Sunday Hunting** in Delaware State Parks
 - b. Failure to comply with any state laws, rules, regulations, and/or policies may result in arrest and/or suspension of all hunting privileges in Delaware State Parks.
 - c. **Handguns, rifles with straight-walled pistol-caliber ammunition and Sharps rifles are not permitted for deer hunting in Delaware State Parks.**
 - d. It is illegal to use or build a nailed or permanent tree stand or ladder. Portable stands must be of a type that will not damage trees. **Unattended stands will be confiscated.**
 - e. Use of trail cameras in Delaware State Parks is prohibited.
 - f. Driving deer into and/or through hunting areas is prohibited.
 - g. The clearing/cutting of vegetation to form shooting lanes or for any other purpose is prohibited.
 - h. Use of Bait is prohibited in Delaware State Parks.
 - i. Use of buckshot is prohibited in Delaware State Parks.
 - j. Driving motorized vehicles off-road into fields, woods, or along trails is prohibited. No motorized hand carts or ATVs are allowed to recover harvested deer. Manual deer carts are authorized for use.
 - k. Park only in the designated parking areas (refer to map for approximate locations).
 - l. State Parks are carry-in, carry-out areas. Please take any trash you accumulate with you.
 - m. Hunting is only allowed at 14 designated pin sites and one permanently disabled hunting stand (refer to map for approximate locations). Each pin site includes a metal ladder stand within a perimeter marked with paint on trees around the stand. Hunters may, at their own risk, hunt from the existing ladder stand or a portable non-damaging tree stand provided by the hunter, not less than 10 feet above ground level placed within the marked perimeter.
 - n. Pin sites and the permanently disabled stand will be filled on a first-come, first-served basis using the self-registration tag board system. Hunters using the permanently disabled stand must have in their possession a valid disabled hunter card issued by the Delaware Division of Fish and Wildlife. The tag board is located in the parking lot at the Dog Training Area on Paradise Alley Road. No tag may be removed prior to 5am. Tags must be returned to board anytime a hunter leaves the stand.
 - o. Hunters are allowed to harvest **antlerless deer and quality bucks only** in Killens Pond State Park. Quality Buck tags may only be used on an antlered deer with an outside antler spread of at least 15 inches. The distance between the tips of a deer’s ears when both ears are held straight out from the head in the “alert” position is approximately 15 inches so a deer in which this tag would be

applicable would generally need to have antlers that are at least as wide as the space between his ear tips.

4. Archery/Crossbow Hunting

- a. Permitted in season and in accordance with Delaware state laws, regulations, and rules, September 1, 2023 - January 31, 2024.
- b. Hunter orange must be worn by archery hunters at all times when dates overlap with any Statewide Gun Seasons.
- c. No arrows or bolts may be nocked prior to hunting in tree stand. No cocked crossbows are allowed prior to hunting in tree stand. Spot and stalk hunting is prohibited.
- d. Hunters may hunt from a portable ground blind within the marked perimeter with a long, recurved or compound bow. Crossbows shall only be used from an elevated stand.

5. General Firearm Hunting

- a. Permitted in season and in accordance with Delaware state laws, regulations, and rules, November 10 – November 18, 2023; December 9 – December 16, 2023 Special Antlerless and January 13, 15 – January 21, 2024.
- b. Muzzleloaders may be used during shotgun seasons.
- c. Handguns, rifles with straight-walled handgun ammunition and Sharps rifles are not permitted for deer hunting in Delaware State Parks. The use of buckshot is prohibited in Delaware State Parks.
- d. There is no shotgun hunting during the October season.
- e. Guns shall not be loaded until hunter is in the stand. Spot and stalk hunting is prohibited.

6. Muzzleloader Hunting

- a. Permitted in season January 22, 2024 – January 27, 2024.
- b. There is no muzzleloader hunting during the statewide October season.
- c. Guns shall not be loaded until hunter is in the stand. Spot and stalk hunting is prohibited.

7. All deer harvested at Killens Pond State Park must be reported on the sign-in/sign-out sheet at the tag board and registered, via the on-line or toll-free reporting system, as required by the Division of Fish and Wildlife. Deer should be reported as follows:

Land Type:	Public
County:	Kent
Zone:	8
Location Type:	State or County Park
Location Description:	Killens Pond State Park

MESSAGE TO ALL HUNTERS:

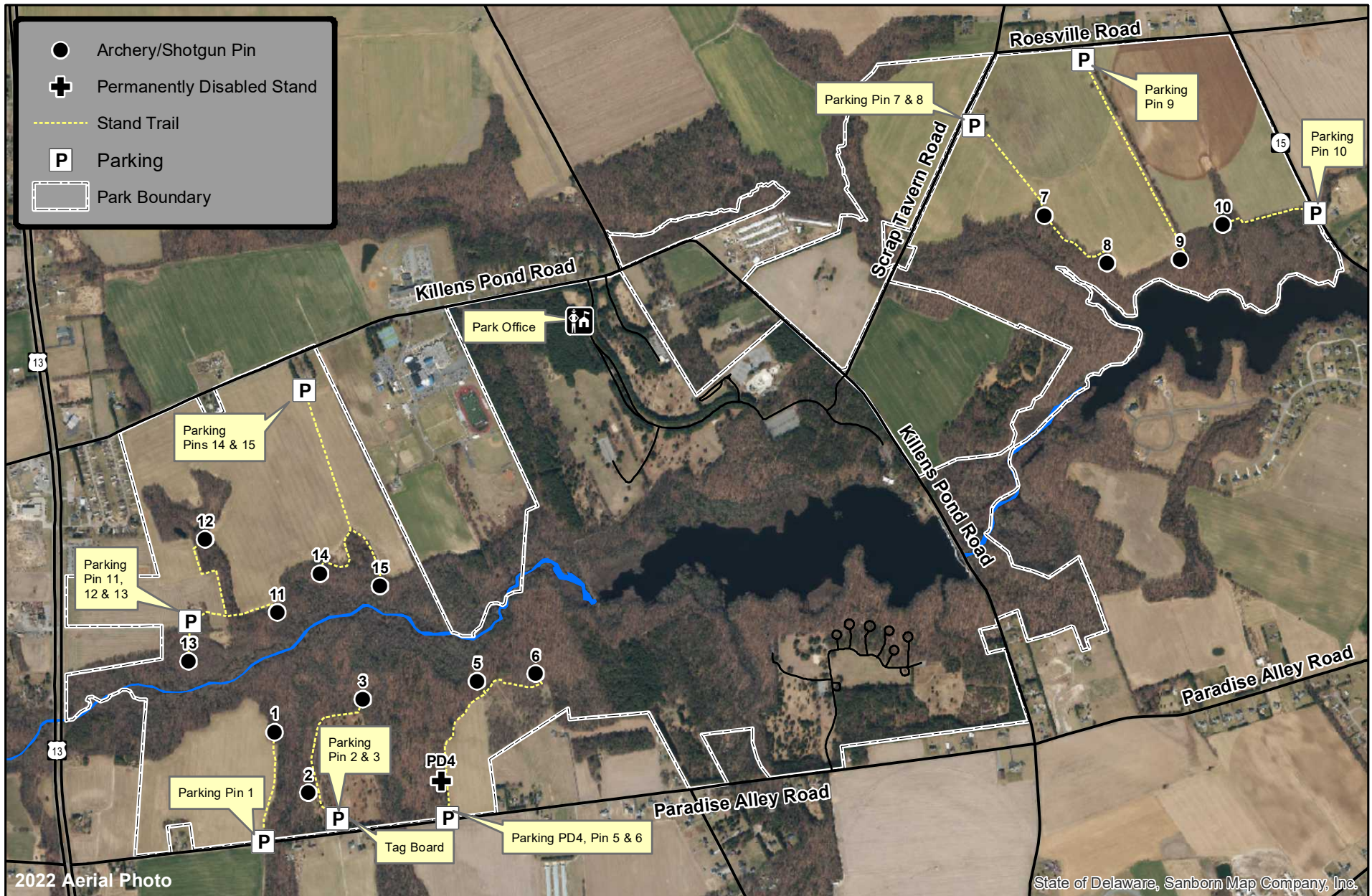
- Please be careful, discrete and considerate around other park visitors. Understand that many park patrons are NOT hunters and some may feel threatened by your presence.
- By hunting in this park, you are a vital part of our “deer management team”. White-tail deer have been shown to ecologically damage their habitat when they exceed 20 deer per square mile. In the majority of our parks, the deer herds reach much greater densities.
- Your harvest information is very important to us. Please submit your data accurately.
- No Trespassing on neighboring private property.
- Have a safe and successful hunt.



Killens Pond State Park Hunting Map 2023-24



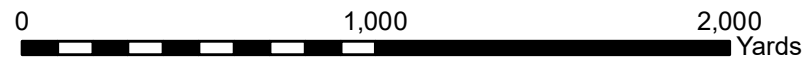
- Archery/Shotgun Pin
- ⊕ Permanently Disabled Stand
- Stand Trail
- P Parking
- ▭ Park Boundary



2022 Aerial Photo

State of Delaware, Sanborn Map Company, Inc.

Updated May 26, 2023
Environmental Stewardship Program
Division of Parks and Recreation



Cape Henlopen State Park (East)

2023 – 2024 Hunting Seasons/Hunting Rules

Refer to map on other side for approximate locations of indicated areas.

1. In addition to the rules and regulations found in the “Delaware Hunting and Trapping Guide: 2023-2024,” specific rules that apply to Cape Henlopen State Park (East) are listed below. **Registration of all hunters participating in the Delaware State Park Hunting Program is required. There is an annual \$10 hunting program charge. This charge is waived for Delaware hunters 65 or over.** Hunters may register at the Cape Henlopen State Park Office or any other Delaware State Park where hunting is permitted.
2. Hunting for deer is permitted in all designated areas in season from September 1, 2023 through January 31, 2024. No firearm hunting for deer is permitted prior to the special **Youth/Non-Ambulatory Disabled Deer Hunt** on November 4, 2023. A tag board is now located across from the Ferry Terminal on the south side of the Trail along the old railroad tracks. All hunters using a park stand must pull the tag from the tag board and fill-in information requested on the sign-in/sign-out sheet. All hunters hunting in Area A are now required to complete the information requested on the sign-in/sign-out sheet (except tag number). During gun seasons hunters in Area A must hunt from an elevated portable stand provided by the hunter.
3. General Park Hunting Rules
 - a. There is **No Sunday Hunting** in Delaware State Parks
 - b. Failure to comply with any state laws, rules, regulations, and/or policies may result in arrest and/or suspension of all hunting privileges in Delaware State Parks.
 - c. Handguns, rifles with straight-walled pistol-caliber ammunition and Sharps rifles are not permitted for deer hunting in Delaware State Parks.
 - d. It is illegal to use or build a nailed or permanent tree stand or ladder. Portable stands must be of a type that will not damage trees. **Unattended stands will be confiscated.**
 - e. **Use of trail cameras** in Delaware State Parks **is prohibited.**
 - f. Driving deer into and/or through hunting areas is prohibited.
 - g. The clearing/cutting of vegetation to form shooting lanes or for any other purpose is prohibited.
 - h. Use of Bait is prohibited in Delaware State Parks.
 - i. Use of buckshot is prohibited in Delaware State Parks.
 - j. Driving motorized vehicles off-road into fields, woods, or along trails is prohibited. No motorized hand carts or ATVs are allowed to recover harvested deer. E-bikes may be used on state park trails that allow bicycles. Bicycles, including E-bikes may not be ridden on paths from state park trails to the deer stand, pin or archery zone. Manual deer carts are authorized for use.
 - k. Park only in designated parking areas (refer to map for approximate locations).
 - l. State Parks are carry-in, carry-out areas. Please take any trash you accumulate with you.
4. Waterfowl Hunting
 - a. Waterfowl Hunting is **permitted** in season **in area A between November 1, 2023 and January 31, 2024.**
 - b. Hunters may NOT construct blinds in this area.
 - c. No waterfowl hunting is permitted in the Gordon’s Pond area.
5. Deer Hunting – Archery and Crossbow hunting
 - a. Permitted in area A in season, from September 1, 2023 through January 31, 2024. Stands 2 – 5, PD1 and PD2 are for the convenience of the hunter and are not mandatory. To hunt from the PD Stands, PD1 and PD2, the hunter must have in their possession a valid disabled hunter card issued by the

Delaware Division of Fish and Wildlife.

- b. There is a minimum 50-yard safety zone along all trails, except the Gordon's Pond Trail which has a 100-yard safety zone.
 - c. Four Archery-only Stands A - D located in the Pinelands section of the Park are available to hunters during the regular Archery season. Hunters must hunt from the stands. Ground hunting is prohibited in this area of the park. Hunters wishing to hunt from these stands must park at the designated parking area for Stand A and walk into the park if the main park gate is closed. When the main gate is open hunters using Stand B, C and D may park near the old tennis courts as indicated on the map.
 - d. Archery hunting is permitted during approved firearms seasons as limited by the rules below and other applicable regulations. Note that hunter orange is required during gun seasons.
6. Deer Hunting - Muzzleloader Season
- a. Permitted in area A, but limited to January 22 – January 27, 2024 only. **There is no October Muzzleloader Season in the Park.**
 - b. Muzzleloaders may also be used during General Firearm Seasons (see below).
 - c. Designated stands are for the convenience of the hunter and are not mandatory. However, during gun seasons hunters must hunt from an elevated portable stand, provided by the hunter, at least 10 feet above the ground. Hunting from the ground during guns seasons is no longer permitted.
7. Deer Hunting – General Firearm Season
- a. Permitted in Area A during the Youth/Non-Ambulatory Disabled Deer Hunt on November 4, 2023, November 10 - November 18, 2023; December 9 - December 16, 2023 Special Antlerless and January 13 - January 21, 2024 seasons. **No gun hunting is permitted until November Shotgun Season.**
 - b. Shotguns and Muzzleloaders are the only firearms permitted for use during General Firearm Seasons in Delaware State Parks.
 - c. Designated stands are for the convenience of the hunter and are not mandatory. However, during gun seasons hunters choosing not to use the wooden stands must hunt from an elevated portable stand, provided by the hunter, at least 10 feet above the ground. **Hunting from the ground during guns seasons is no longer permitted.**
8. All deer harvested in the East Unit of Cape Henlopen State Park must be reported via the on-line or toll-free telephone reporting system as required by the Delaware Division of Fish and Wildlife. Deer should be reported as follows:

Land Type:	Public
County:	Sussex
Zone:	9
Location Type:	State or County Park
Location Description:	Cape Henlopen State Park

9. Special Managed Hunt

A special managed antlerless deer hunt will be held in the main part of Cape Henlopen State Park on Tuesday, January 16 and Wednesday, January 17, 2024. Stands will be filled via an in-person lottery held at the Fishing Pier at 5:00 am each morning. For more information visit the Delaware State Parks website - <https://destateparks.com/Adventures/Hunting>.

MESSAGE TO ALL HUNTERS:

- Please be careful, discrete and considerate around other park visitors. Understand that many park patrons are NOT hunters and some may feel threatened by your presence.
- Please show consideration to fellow hunters.
- Have a safe and successful hunt.



Cape Henlopen State Park Hunting Map - East Side 2023-24



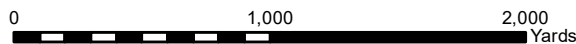
Legend

Deer Stand

- Archery Only Stand
- Deer Stand
- Permanently Disabled Stand
- Parking
- Hunting Trail
- Trail
- Cape Henlopen State Park
- Zone A (Deer & Waterfowl Only)

2022 Aerial Photo

State of Delaware, Sanborn Map Company, Inc.



Cape Henlopen State Park (West)

2023–24 Hunting Seasons/Hunting Rules

Refer to map for approximate locations of indicated areas.

1. In addition to the rules and regulations found in the “Delaware Hunting and Trapping Guide: 2023-2024” specific rules that apply to Cape Henlopen State Park (West) are listed below. **Registration of all hunters participating in the Delaware State Park Hunting Program is required. There is an annual \$10 hunting program charge. This charge is waived for Delaware hunters 65 or over.** Hunters may register at the Cape Henlopen State Park or any Delaware State Park where hunting is permitted.
2. Hunting for deer is permitted in all designated areas in season from September 1, 2023 through January 31, 2024. No firearm hunting for deer is permitted prior to the special **Youth/Non-Ambulatory Disabled Deer Hunt** on November 5, 2023.
3. General Park Hunting Rules
 - a. There is **No Sunday Hunting** in Delaware State Parks
 - b. Failure to comply with any state laws, rules, regulations, and/or policies may result in arrest and/or suspension of all hunting privileges in Delaware State Parks.
 - c. Handguns, rifles with straight-walled pistol-caliber ammunition and Sharps rifles are not permitted for deer hunting in Delaware State Parks.
 - d. It is illegal to use or build a nailed or permanent tree stand or ladder. Portable stands must be of a type that will not damage trees. **Unattended stands will be confiscated.**
 - e. **Use of trail cameras** in Delaware State Parks **is prohibited.**
 - f. Driving deer into and/or through hunting areas is prohibited.
 - g. The clearing/cutting of vegetation to form shooting lanes or for any other purpose is prohibited.
 - h. Use of Bait is prohibited in Delaware State Parks.
 - i. Use of buckshot is prohibited in Delaware State Parks.
 - j. Driving motorized vehicles off-road into fields, woods, or along trails is prohibited. No motorized hand carts or ATVs are allowed to recover harvested deer. E-bikes may be used on state park trails that allow bicycles. Bicycles, including E-bikes may not be ridden on paths from state park trails to the deer stand, pin or archery zone. Manual deer carts are authorized for use.
 - k. Park only in designated parking areas (refer to map for approximate locations).
 - l. State Parks are carry-in, carry-out areas. Please take any trash you accumulate with you.
 - m. All hunters must honor the 200-yard safety zone (**100 yards on each side**) along the Junction-Breakwater Trail. This area is heavily used throughout the year by the non-hunting public.
4. Spray Irrigation Area: Sussex County will be permitting deer hunting on lands around the Wolf Neck Wastewater Treatment Plant during the 2023-24 hunting season. For more information contact Sussex County at (302) 855-7700.
5. Waterfowl Hunting
 - a. Waterfowl Hunting is permitted in season in area F. Hunters may NOT construct blinds in this area.
 - b. Waterfowl Hunting in the park is restricted to between November 1, 2023 and January 31, 2024.
6. Deer Hunting – Archery and Crossbow hunting
 - a. Permitted at Archery Pins E1 – E5 in former Archery-only Area E, and areas F and G in season from September 1, 2023 through January 31, 2024.
 - b. Hunters using Archery pins E1 – E5 must hunt from an elevated portable stand not less than 10 feet above the ground within the radius painted on trees around the central pin. Pins are available on a first

come/first served basis. Tags may be pulled from the tag board located in the parking lot on Wolfe Neck Road. Hunters must sign in and out at the tag board when taking and returning tags.

- c. All areas labeled G are Archery/Crossbow ONLY areas. In area G, Archers must hunt at least 100 yards from the Junction-Breakwater Trail.
 - d. Permitted during firearms seasons. Note that hunter orange is required during gun seasons, **including in the archery and crossbow only areas.**
7. Deer Hunting - Muzzleloader Season
- a. Permitted in area F for the January 22– January 27, 2024 season only.
 - b. Hunters must hunt from an elevated portable stand, provided by the hunter, not less than 10 feet above the ground during all gun seasons.
 - c. There is not an October Muzzleloader Season in the Park.
8. Deer Hunting – General Firearm Seasons
- a. Permitted in area F ONLY including the, **Youth/Non-Ambulatory Disabled Deer Hunt** November 4, 2023, November 10 - November 18, 2023, December 9 - December 16, 2023 Special Antlerless and January 13, 15 - January 21, 2024 seasons.
 - b. Shotguns and muzzleloaders are the only firearms permitted for use during the general firearm deer season in Delaware State Parks.
 - c. Hunters must hunt from an elevated portable stand, provided by the hunter, not less than 10 feet above the ground during all gun seasons.
9. All deer harvested in the West Unit of Cape Henlopen State Park must be reported via the on-line or toll-free telephone reporting system as required by the Delaware Division of Fish and Wildlife. Deer should be reported as follows:

Land Type:	Public
County:	Sussex
Zone:	9
Location Type:	State or County Park
Location Description:	Cape Henlopen State Park

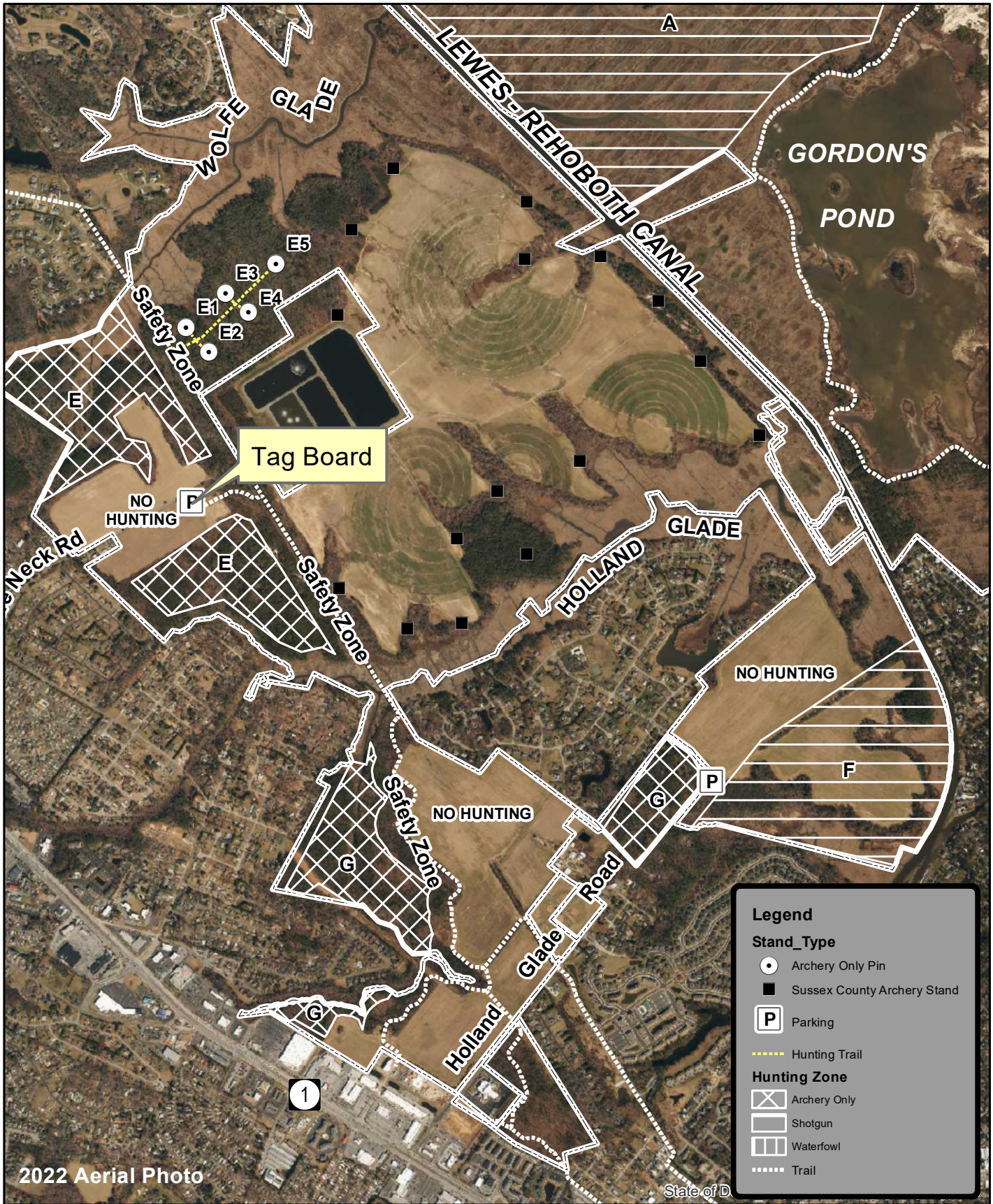
MESSAGE TO ALL HUNTERS:

- Please be careful, discrete and considerate around other park visitors. Understand that many park patrons are NOT hunters and some may feel threatened by your presence. Please show consideration to fellow hunters.

CapeWest2023–24 Updated 6/5/2023



Cape Henlopen State Park Hunting Map - West Side 2023-24



Legend

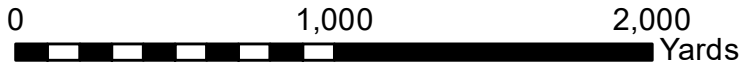
Stand_Type

- Archery Only Pin
- Sussex County Archery Stand
- Ⓟ Parking
- Hunting Trail

Hunting Zone

- ▨ Archery Only
- Shotgun
- ▤ Waterfowl
- ⋯ Trail

2022 Aerial Photo



Cape Henlopen State Park – Angola Neck Nature Preserve 2023 – 2024 Hunting Seasons/Hunting Rules

Refer to map on other side for approximate locations of indicated areas.

1. In addition to the rules and regulations found in the “Delaware Hunting and Trapping Guide: 2023-2024,” specific rules that apply to Cape Henlopen State Park (East) are listed below. **Registration of all hunters participating in the Delaware State Park Hunting Program is required. There is an annual \$10 hunting program charge. This charge is waived for Delaware hunters 65 or over.** Hunters may register at the Cape Henlopen State Park Office or at any other Delaware State Park where hunting is permitted.
2. Hunters wishing to hunt at the Angola Neck Nature Preserve must register in person at the Cape Henlopen State Park office. The office is open daily 8:00 am to 4:30 pm through October. From November 1 to March 31 the office is open Monday – Friday 8:00 am to 4:00 pm.
3. General Hunting Rules
 - a. There is **No Sunday Hunting** in Delaware State Parks
 - b. Failure to comply with any state laws, rules, regulations, and/or policies may result in arrest and/or suspension of all hunting privileges in Delaware State Parks.
 - c. **Use of any firearms** other than compound bows, recurve bows and crossbows **is prohibited.**
 - d. It is illegal to use or build a nailed or permanent tree stand or ladder.
 - e. **Use of trail cameras** in Delaware State Parks **is prohibited.**
 - f. Driving deer into and/or through hunting areas is prohibited.
 - g. The clearing/cutting of vegetation to form shooting lanes or for any other purpose is prohibited.
 - h. Use of BAIT is prohibited in Delaware State Parks.
 - i. Driving motorized vehicles off-road into fields, woods, or along trails is prohibited. No motorized hand carts or ATVs are allowed to recover harvested deer.
 - j. Park only in designated parking areas (refer to map for approximate locations).
 - k. State Parks are carry-in, carry-out areas. Please take any trash you accumulate with you.
4. Deer Hunting – Archery/Crossbow
 - a. Permitted in season, from September 1, 2023 through January 31, 2024.
 - b. Permitted during approved firearms seasons. Note that hunter orange is required during gun seasons.
 - c. There are ten (10) designated archery pin sites. Seven (7) are located on the Angola Neck Tract at the south end of Camp Arrowhead Road and three (3) at the Perry Tract, accessible from Waterview Road east of its intersections with Camp Arrowhead and Bookhammer Landing Roads. Hunters using these pin sites must hunt from a portable, non-damaging tree stand from within the marked perimeter around each pin. Perimeters are indicated by individual trees marked with paint. Stands must be a minimum of 10 feet above ground level.
 - d. There is one archery hunting zone located at the Angola Neck Tract on the west side of Camp Arrowhead Road. The archery zone is an island of upland surrounded by wetland. The hunter using the archery zone may hunt from a portable, non-damaging tree stand or a portable ground blind. However, a stand or blind is not required within the archery zone. There is no minimum height requirement for stands within the archery zone.
 - e. Tags for the ten pins and archery zone will be available on a first-come, first-served basis on the tag board at the designated parking area for pins 1 – 4. Tags may be pulled no sooner than 4:30 am on the day of the hunt. Tags must be returned to the board whenever the hunter vacates a pin or the archery zone.

5. All deer harvested at the Angola Neck Nature Preserve must be reported via the on-line or toll-free telephone reporting system as required by the Delaware Division of Fish and Wildlife. Deer should be reported as follows:

Land Type:	Public
County:	Sussex
Zone:	15
Location Type:	State or County Park
Location Description:	Cape Henlopen State Park

MESSAGE TO ALL HUNTERS:

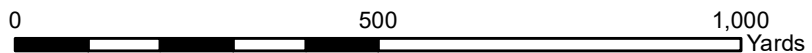
- Angola Neck Nature Preserve is bordered by residential neighborhoods. Please observe all private property while hunting at the Preserve.
- Remember to make a safe and proper management decision before you shoot.
- Have a safe and successful hunt.

CHSP(Angola Neck)2023-24 Updated 6/5/2023



Cape Henlopen State Park

Hunting Map 2023-24 - ANNP Angola Neck Tract





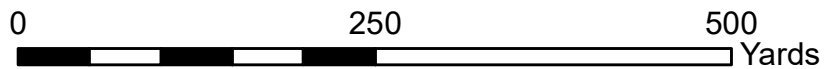
Cape Henlopen State Park Hunting Map 2023-24 - ANNP Perry Tract



- Archery Only Pin
- P Parking
- Hunting Trail
- ▭ Angola Neck Nature Preserve



2022 Aerial Photo



Cape Henlopen State Park – Godwin Tract 2023–24 Hunting Seasons/Hunting Rules

Refer to map on other side for approximate locations of indicated areas.

1. In addition to the rules and regulations found in the “Delaware Hunting and Trapping Guide: 2023-2024,” specific rules that apply to Cape Henlopen State Park (East) are listed below. **Registration of all hunters participating in the Delaware State Park Hunting Program is required. There is an annual \$10 hunting program charge. This charge is waived for Delaware hunters 65 or over.** Hunters may register at the Cape Henlopen State Park Office or at any other Delaware State Park where hunting is permitted.
2. **Hunters wishing to hunt on the Godwin Tract must register in person at the Cape Henlopen State Park office. The office is open daily 8:00 am to 4:30 pm April 1 to October 31. From November 1 to March 31 the office is open Monday – Friday 8:00 am to 4:00 pm.**
3. General Park Hunting Rules
 - a. There is **No Sunday Hunting** in Delaware State Parks
 - b. Failure to comply with any state laws, rules, regulations, and/or policies may result in arrest and/or suspension of all hunting privileges in Delaware State Parks.
 - c. Handguns, rifles with straight-walled pistol-caliber ammunition and Sharps rifles are not permitted for deer hunting in Delaware State Parks.
 - d. It is illegal to use or build a nailed or permanent tree stand or ladder. Portable stands must be of a type that will not damage trees. **Unattended stands will be confiscated.**
 - e. **Use of trail cameras** in Delaware State Parks **is prohibited.**
 - f. Driving deer into and/or through hunting areas is prohibited.
 - g. The clearing/cutting of vegetation to form shooting lanes or for any other purpose is prohibited.
 - h. Use of Bait is prohibited in Delaware State Parks.
 - i. Use of buckshot is prohibited in Delaware State Parks.
 - j. Driving motorized vehicles off-road into fields, woods, or along trails is prohibited. No motorized hand carts or ATVs are allowed to recover harvested deer. E-bikes may be used on state park trails that allow bicycles. Bicycles, including E-bikes may not be ridden on paths from state park trails to the deer stand, pin or archery zone. Manual deer carts are authorized for use.
 - k. Park only in designated parking areas (refer to map for approximate locations).
 - l. State Parks are carry-in, carry-out areas. Please take any trash you accumulate with you.
 - m. There is one Permanently Disabled Deer Stand and five designated pin sites. The Permanently Disabled Stand is for hunters possessing a state-issued disabled hunter card. Hunters using the five pin sites must hunt from a portable, non-damaging tree stand from within the marked 25-yard perimeter around each pin. Stands must be a minimum of 10 feet above ground level.
 - n. Tags for the stand and five pins will be available on a first-come, first-served basis on the tag board at the entrance to the designated parking area. Tags may be pulled no sooner than 4:30 am on the day of the hunt.
4. Archery and Crossbow hunting
 - a. Permitted in season, from September 1, 2023 through January 31, 2024.
 - b. Permitted during approved firearms seasons. Note that hunter orange is required during gun seasons.
5. Muzzleloader Season
 - a. Permitted in season October 6 – 14, 2023 and January 22 – 27, 2024.
 - b. Muzzleloaders may also be used during Shotgun Seasons (see below).

6. General Firearm Season
 - a. Permitted during October 16, 20, 22, 27, 28, and 30, 2023 (Special Antlerless), November 4, 2023 (Youth Hunt), November 10 - 18, 2023; December 9 - December 16, 2023 (Special Antlerless) and January 13, 15 - 21, 2024 seasons.
 - b. **Shotguns** and **Muzzleloaders** are the only firearms permitted for use in Delaware State Parks during general firearm deer seasons.
7. All deer harvested in the Godwin Tract of Cape Henlopen State Park must be reported via the on-line or toll-free telephone reporting system as required by the Delaware Division of Fish and Wildlife. Deer should be reported as follows:

Land Type:	Public
County:	Sussex
Zone:	15
Location Type:	State or County Park
Location Description:	Cape Henlopen State Park

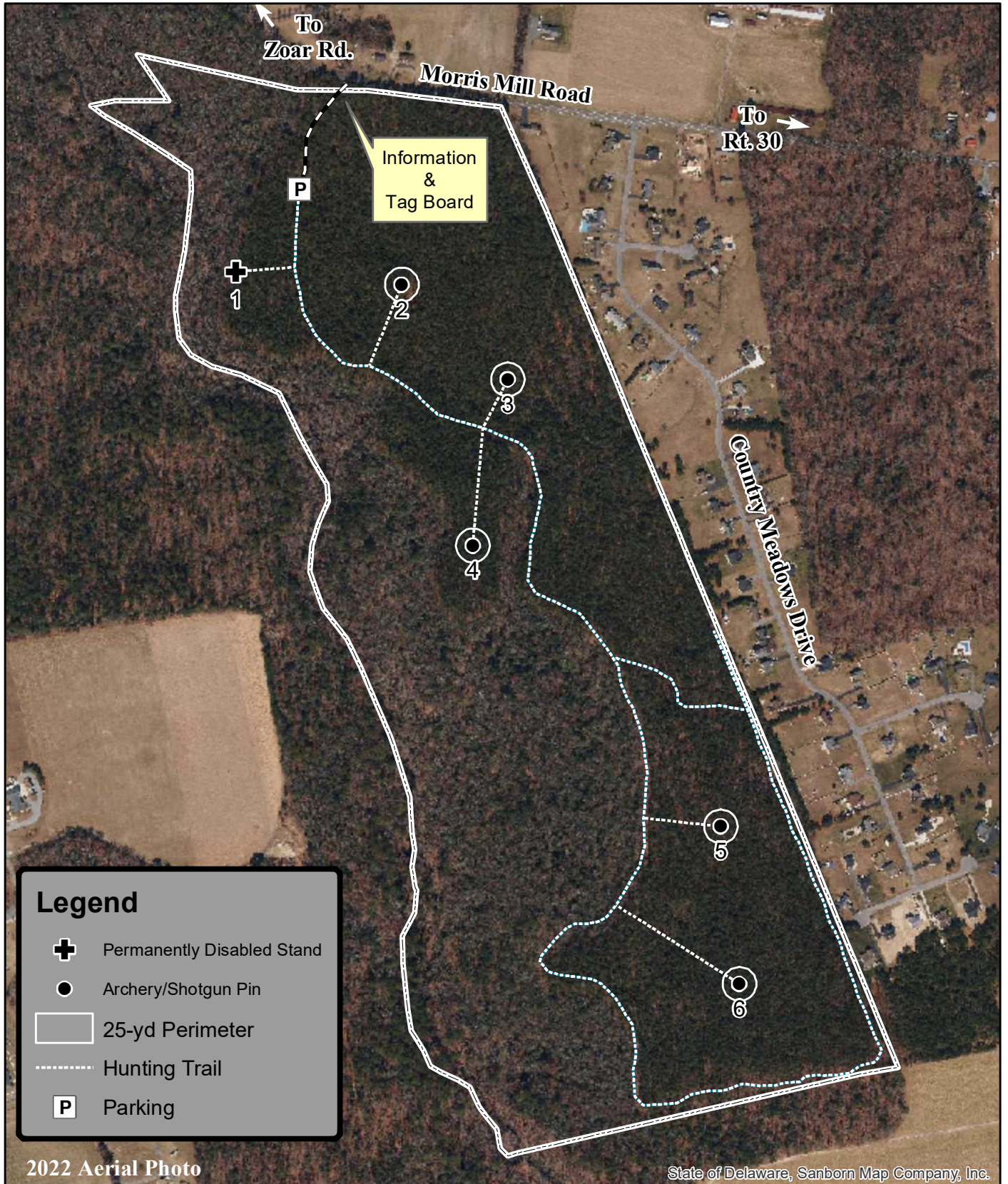
MESSAGE TO ALL HUNTERS:

- The Godwin Tract is bordered by residential neighborhoods. Please observe all private property while hunting on the Godwin Tract.
- Remember to make a safe and proper management decision before you shoot.
- Have a safe and successful hunt.
- Failure to abide by the rules herein may result in the loss of hunting privileges in Delaware State Parks.

CapeGodwin 2023-24 Updated 6/5/2023



Cape Henlopen State Park Hunting Map - Godwin Tract 2023-24



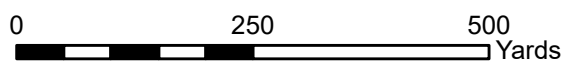
Legend

- Permanently Disabled Stand
- Archery/Shotgun Pin
- 25-yd Perimeter
- Hunting Trail
- Parking

2022 Aerial Photo

State of Delaware, Sanborn Map Company, Inc.

Updated May 4, 2022
Environmental Stewardship Program
Division of Parks and Recreation



Delaware Seashore State Park

2023–24 Hunting Seasons/Hunting Rules

Refer to map for approximate locations of indicated areas

1. In addition to the rules and regulations found in the “Delaware Hunting and Trapping Guide: 2023-2024”, specific rules that apply to the Delaware Seashore State Park are listed below. **Registration of all hunters participating in the Delaware State Park Hunting Program is required. There is an annual \$10 hunting program charge. This charge is waived for Delaware hunters 65 or over.** Hunters may register at the Delaware Seashore State Park Office or at any Delaware State Park where hunting is permitted.
2. General Park Hunting Rules
 - a. There is **No Sunday Hunting** in Delaware State Parks
 - b. Failure to comply with any state laws, rules, regulations, and/or policies may result in arrest and/or suspension of all hunting privileges in Delaware State Parks.
 - c. **Handguns, rifles with straight-walled pistol-caliber ammunition and Sharps rifles are not permitted for deer hunting in Delaware State Parks.**
 - d. It is illegal to use or build a nailed or permanent tree stand or ladder. Portable stands must be of a type that will not damage trees. **Unattended stands will be confiscated.**
 - e. Use of trail cameras in Delaware State Parks is prohibited.
 - f. Driving deer into and/or through hunting areas is prohibited.
 - g. The clearing/cutting of vegetation to form shooting lanes or for any other purpose is prohibited.
 - h. Use of Bait is prohibited in Delaware State Parks.
 - i. Use of buckshot is prohibited in Delaware State Parks.
 - j. Driving motorized vehicles off-road into fields, woods, or along trails is prohibited. No motorized hand carts or ATVs are allowed to recover harvested deer. E-bikes may be used on state park trails that allow bicycles. Bicycles, including E-bikes may not be ridden on paths from state park trails to the deer stand, pin or archery zone. Manual deer carts are authorized for use.
 - k. Park only in designated parking areas (refer to map for approximate locations).
 - l. State Parks are carry-in, carry-out areas. Please take any trash you accumulate with you.
3. Waterfowl Hunting
 - a. Waterfowl hunting, in season, is permitted from November 1, 2023 through January 31, 2024.
 - b. Hunters must hunt from one of 16 designated and numbered blind sites only. No exceptions. Blind sites are located on Rehoboth and Indian River Bays and are designated by brown and white signs. Boat blinds may be used, but must be within 10 yards of the designated blind site sign. Hunting in open water boat blinds must be a minimum of 1500 feet from designated blind sites in accordance with Delaware Division of Fish and Wildlife regulations.
 - c. Use of blind sites will be on a first-come, first-served basis. Hunters may build GRASS BLINDS for these sites after August 12, 2023. **The Division of Parks and Recreation is not liable for blinds built on park property.** Vegetation may not be cut from State Park property. *Phragmites* and Chinese Silver Grass (*Miscanthus*) can NOT be used for blind construction.
 - d. **NOTE:** Waterfowl seasons as determined by the Delaware Division of Fish & Wildlife and approved by the United States Fish & Wildlife Service. Dates are available in the “Delaware Hunting and Trapping Guide: 2023-2024”.
4. Deer Hunting – Archery/Crossbow Season
 - a. Permitted on Burtons Island Only September 1, 2023 to January 31, 2024.

- b. Archers must hunt from an elevated portable, non-damaging tree stand when firearm hunting is occurring on Burtons Island. Archers are required to wear hunter orange during all firearm seasons.
- 5. Deer Hunting – Muzzleloader Season
 - a. Permitted on Burtons Island Only January 22 - January 27, 2024.
 - b. Hunters must hunt from an elevated portable stand, provided by the hunter, at least 10 feet above the ground. Hunting from the ground during guns seasons is no longer permitted.
- 6. Deer Hunting – General Firearm Season
 - a. Permitted on Burtons Island Only, Youth/Non-ambulatory Disable Deer Hunt November 4, 2023, November 10 – November 18, 2023, December 9 – December 16, 2023 Special Antlerless and January 13 – January 21, 2024 seasons.
 - b. Hunters must hunt from an elevated portable stand, provided by the hunter, at least 10 feet above the ground. Hunting from the ground during guns seasons is no longer permitted.
- 7. Deer harvest data is an important tool for state natural resource managers. Accurate data is essential to help us manage the deer herd in Delaware State Parks and the State Parks hunting program. All deer harvested on Burtons Island in Delaware Seashore State Park must be reported via the on-line or toll-free telephone reporting system as required by the Delaware Division of Fish and Wildlife. Deer should be reported as follows:

Land Type:	Public
County:	Sussex
Zone:	15
Location Type:	State or County Park
Location Description:	Delaware Seashore State Park

MESSAGE TO ALL HUNTERS:

- Please be careful, discrete and considerate around other park visitors. Understand that many park patrons are NOT hunters and some may feel threatened by your presence. Have a safe and successful hunt.

DelawareSeashore2023-24 Updated 6/5/2023



Delaware Seashore State Park Hunting Map 2023-24



Delaware Seashore State Park - Fresh Pond Tract 2023 – 2024 Hunting Seasons/Hunting Rules

Refer to map for approximate locations of indicated areas.

1. In addition to the rules and regulations found in the “Delaware Hunting and Trapping Guide: 2023-2024”, specific rules that apply to the Fresh Pond Tract are listed below. **Registration of all hunters participating in the Delaware State Park Hunting Program is required. There is an annual \$10 hunting program charge. This charge is waived for Delaware hunters 65 or over.** Hunters may register at the Delaware Seashore State Park Office or at any Delaware State Park where hunting is permitted.
2. General Park Hunting Rules
 - a. There is **No Sunday Hunting** in Delaware State Parks
 - b. Failure to comply with any state laws, rules, regulations, and/or policies may result in arrest and/or suspension of all hunting privileges in Delaware State Parks.
 - c. **Handguns, rifles with straight-walled pistol-caliber ammunition and Sharps rifles are not permitted for deer hunting in Delaware State Parks.**
 - d. It is illegal to use or build a nailed or permanent tree stand or ladder. Portable stands must be of a type that will not damage trees. **Unattended stands will be confiscated.**
 - e. Use of trail cameras in Delaware State Parks is prohibited.
 - f. Driving deer into and/or through hunting areas is prohibited.
 - g. The clearing/cutting of vegetation to form shooting lanes or for any other purpose is prohibited.
 - h. Use of Bait is prohibited in Delaware State Parks.
 - i. Use of buckshot is prohibited in Delaware State Parks.
 - j. Driving motorized vehicles off-road into fields, woods, or along trails is prohibited. No motorized hand carts or ATVs are allowed to recover harvested deer. E-bikes may be used on state park trails that allow bicycles. Bicycles, including E-bikes may not be ridden on paths from state park trails to the deer stand, pin or archery zone. Manual deer carts are authorized for use.
 - k. Park only in designated parking areas (refer to map for approximate locations).
 - l. State Parks are carry-in, carry-out areas. Please take any trash you accumulate with you.
3. Deer Hunting – Archery/Crossbow Season
 - a. September 1, 2023 – January 31, 2024.
 - b. **Note the areas marked Zone A & C on the map are Archery/Crossbow Only areas.** Self-registration is by Zone and is on a first-come, first-served basis.
 - c. In Hunting Zone B, self-registration for stands #1 -10 is on a first-come, first-served basis. Stand #1 is for use **ONLY** by hunters possessing a Permanently Disabled Hunter card issued by the Delaware Division of Fish and Wildlife.
 - d. Hunters must sign in and sign out on the registration board at the parking lot off Hickman Road.
 - e. These stands are for your convenience and are not mandatory. Archery hunters may hunt from a portable stand or from the ground throughout the zone so long as it is not within 50 yards of a trail or road.
 - f. **There is no archery/crossbow hunting in Zone B during gun seasons.**
 - g. **Note the 50 yard Safety Zones along the trails throughout the park as well as near occupied dwellings.**
4. Deer Hunting – Muzzleloader and General Firearm Seasons
 - a. **Due to increased park use by the public, the first gun season will begin with the November Shotgun Season. As a result, the October Antlerless Shotgun dates and the October Muzzleloader Seasons are closed.**

- b. Open during permitted seasons from designated stands #1-10 only, November 10 – November 18, 2023, December 9 – December 16, 2023 (Special Antlerless), January 13, 15 – January 21, 2024 and January 22 - January 27, 2024 (Muzzleloader).
 - c. Self-registration is on a first-come, first-served basis. Hunters must sign in and sign out on the registration board re-located to the Hickman Road entrance. Sign-in sheets and tags will be distributed at 5:00 am during shotgun season. Stand #1 is for use ONLY by hunters possessing a Permanently Disabled Hunter card issued by the Delaware Division of Fish and Wildlife.
 - d. Hunting is prohibited within 50 yards of any park trail. The clearing/cutting of vegetation to form shooting lanes or for any other purpose is prohibited.
5. All deer harvested in the Fresh Pond Unit of Delaware Seashore State Park must be reported via the on-line or toll-free telephone reporting system as required by the Delaware Division of Fish and Wildlife. Deer should be reported as follows:

Land Type:	Public
County:	Sussex
Zone:	17
Location Type:	State or County Park
Location Description:	Delaware Seashore State Park

MESSAGE TO ALL HUNTERS:

- Please be careful, discrete and considerate around other park visitors. Understand that many park patrons are NOT hunters and some may feel threatened by your presence.
- Please show consideration to fellow hunters.
- Have a safe and successful hunt.

DSSPFreshPond2023-24 Updated 6/5/2023



Delaware Seashore State Park Fresh Pond Hunting Map 2023-24



Legend

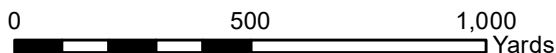
- Deer Stand
- Permanently Disabled Stand
- Archery Only
- Parking
- Trail
- Park Boundary



2017 Aerial Photo

Surdex Corp, 2017

Updated May 26, 2023
Environmental Stewardship Program
Division of Parks and Recreation



Delaware Seashore State Park – Thompson Island 2023–24 Hunting Seasons/Hunting Rules

Refer to map for approximate locations of indicated areas.

1. In addition to the rules and regulations found in the “Delaware Hunting and Trapping Guide: 2023-2024”, specific rules that apply to the Thompson Island Nature Preserve are listed below. **Registration of all hunters participating in the Delaware State Park Hunting Program is required. There is an annual \$10 hunting program charge. This charge is waived for Delaware hunters 65 or over.** Hunters may register at the Delaware Seashore State Park Office or at any Delaware State Park where hunting is permitted.
2. General State Park Hunting Rules
 - a. There is **No Sunday Hunting** in Delaware State Parks
 - b. Failure to comply with any state laws, rules, regulations, and/or policies may result in arrest and/or suspension of all hunting privileges in Delaware State Parks.
 - c. **Handguns, rifles with straight-walled pistol-caliber ammunition and Sharps rifles are not permitted for deer hunting in Delaware State Parks.**
 - d. It is illegal to use or build a nailed or permanent tree stand or ladder. Portable stands must be of a type that will not damage trees. **Unattended stands will be confiscated.**
 - e. Use of trail cameras in Delaware State Parks is prohibited.
 - f. Driving deer into and/or through hunting areas is prohibited.
 - g. The clearing/cutting of vegetation to form shooting lanes or for any other purpose is prohibited.
 - h. Use of Bait is prohibited in Delaware State Parks.
 - i. Use of buckshot is prohibited in Delaware State Parks.
 - j. Driving motorized vehicles off-road into fields, woods, or along trails is prohibited. No motorized hand carts or ATVs are allowed to recover harvested deer. Manual deer carts are authorized for use.
 - k. Park only in designated parking areas (refer to map for approximate locations).
 - l. State Parks are carry-in, carry-out areas. Please take any trash you accumulate with you.
3. Deer Hunting – Archery/Crossbow Seasons
 - a. Archery/crossbow hunting **ONLY** is permitted for deer, in season, Monday through Thursday, November 27, 2023 through January 31, 2024
 - b. Hunting only allowed from the wooden PD Stand or a portable non-damaging tree stand (provided by the hunter), not less than 10 feet above ground level, within the perimeter marked with paint on trees around a central numbered pin. The PD Stand is for use **ONLY** by hunters possessing a Permanently Disabled Hunter card issued by the Delaware Division of Fish and Wildlife.
 - c. The PD stand and Pin sites will be filled on a first-come, first-served basis using the self-registration tag board system. The tag board is located in the parking lot at the end of Bay Road.
 - d. Bicycles, including E-bikes are not permitted on the trail at Thompson Island.
 - e. It is illegal to use or build a nailed or permanent tree stand or ladder. Portable stands must be of a type that will not damage trees. Unattended stands will be confiscated.
 - f. Hunter orange shall be worn in accordance with Delaware Division of Fish and Wildlife regulations during gun seasons.
3. All deer harvested in the Fresh Pond Unit of Delaware Seashore State Park must be reported via the on-line or toll-free telephone reporting system as required by the Delaware Division of Fish and Wildlife. Deer should be reported as follows:

Land Type:	Public
County:	Sussex
Zone:	15
Location Type:	State or County Park
Location Description:	Delaware Seashore State Park
4. Hunting for waterfowl, rabbit, quail and dove is not permitted.

MESSAGE TO ALL HUNTERS:

- Please be careful, discrete and considerate around other park visitors. Understand that many park patrons are NOT hunters and some may feel threatened by your presence.
- By hunting in this park, you are a vital part of our “deer management team”. White-tail deer have been shown to ecologically damage their habitat when they reach 20 deer per square mile. In the majority of our parks, the deer herds have much greater densities than this.
- Your harvest information is very important to us. Please submit your data accurately. Have a safe and successful hunt.

Thompson Island2023-24, Updated 6/5/2023










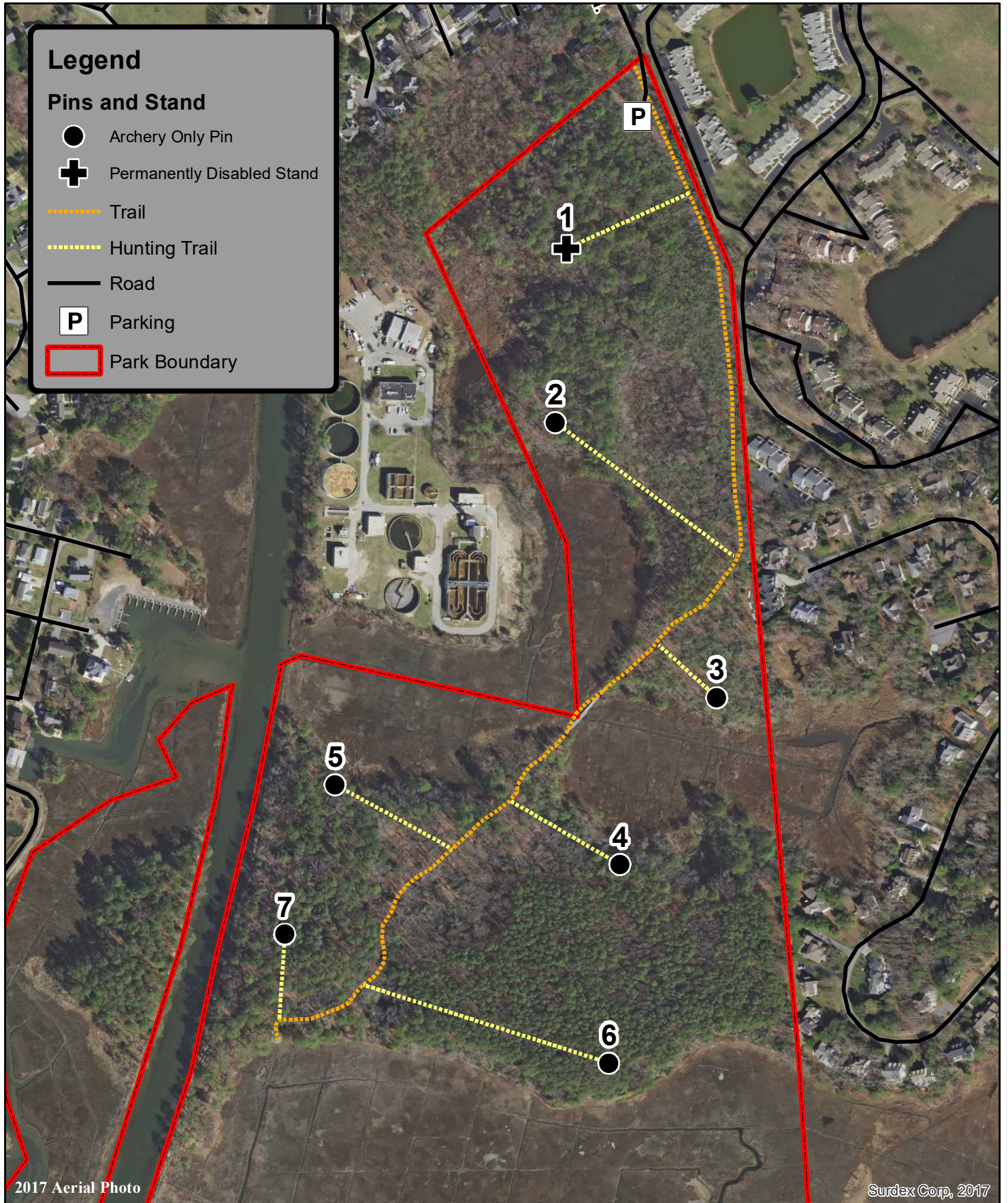
Thompson Island Nature Preserve Hunting Map - 2023-24



Legend

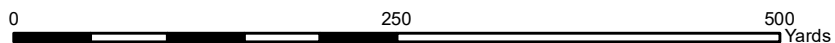
Pins and Stand

-  Archery Only Pin
-  Permanently Disabled Stand
-  Trail
-  Hunting Trail
-  Road
-  Parking
-  Park Boundary



2017 Aerial Photo

Surdex Corp, 2017



Holts Landing State Park

2023–24 Hunting Seasons/Hunting Rules

Refer to map for approximate locations of indicated areas.

1. In addition to the rules and regulations found in the “Delaware Hunting and Trapping Guide: 2023-2024”, specific rules that apply to Holts Landing State Park are listed below. **Registration of all hunters participating in the Delaware State Park Hunting Program is required. There is an annual \$10 hunting program charge. This charge is waived for Delaware hunters 65 or over.** Hunters may register at the Delaware Seashore State Park Office or at any Delaware State Park where hunting is permitted.
2. General State Park Hunting Rules
 - a. There is **No Sunday Hunting** in Delaware State Parks
 - b. Failure to comply with any state laws, rules, regulations, and/or policies may result in arrest and/or suspension of all hunting privileges in Delaware State Parks.
 - c. **Handguns, rifles with straight-walled pistol-caliber ammunition and Sharps rifles are not permitted for deer hunting in Delaware State Parks.**
 - d. It is illegal to use or build a nailed or permanent tree stand or ladder. Portable stands must be of a type that will not damage trees. **Unattended stands will be confiscated.**
 - e. Use of trail cameras in Delaware State Parks is prohibited.
 - f. Driving deer into and/or through hunting areas is prohibited.
 - g. The clearing/cutting of vegetation to form shooting lanes or for any other purpose is prohibited.
 - h. Use of Bait is prohibited in Delaware State Parks.
 - i. Use of buckshot is prohibited in Delaware State Parks.
 - j. Driving motorized vehicles off-road into fields, woods, or along trails is prohibited. No motorized hand carts or ATVs are allowed to recover harvested deer. E-bikes may be used on state park trails that allow bicycles. Bicycles, including E-bikes may not be ridden on paths from state park trails to the deer stand, pin or archery zone. Manual deer carts are authorized for use.
 - k. Park only in the designated parking areas (refer to map for approximate locations).
 - l. State Parks are carry-in, carry-out areas. Please take any trash you accumulate with you.
3. Deer Hunting – Archery/Crossbow Seasons
 - a. Archery/crossbow hunting **ONLY** is permitted for deer, in season and in designated areas from Monday, October 16, 2023 through Wednesday, January 31, 2024.
 - b. Hunters shall hunt from one of three (3) accessible deer stands or the designated archery zone. Each stand and the archery zone shall be occupied by only one hunter. Mentored hunting is allowed, but only one member shall carry a bow/crossbow and actively hunt at a time.
 - c. The three (3) stands and the archery zone shall be filled on a first-come, first-served basis using the self-registration tag board. The tag board is located on the back of the trailhead kiosk near the designated hunter parking.
4. All deer harvested at Holts Landing State Park must be reported via the on-line or toll-free telephone reporting system as required by the Delaware Division of Fish and Wildlife. Deer should be reported as follows:

Land Type:	Public
County:	Sussex
Zone:	17

Location Type: State or County Park
Location Description: Holts Landing State Park

5. Hunting for waterfowl, rabbit, quail and dove is not permitted.

MESSAGE TO ALL HUNTERS:

- Please be careful, discrete and considerate around other park visitors. Understand that many park patrons are NOT hunters and some may feel threatened by your presence.
- By hunting in this park, you are a vital part of our “deer management team”. White-tail deer have been shown to ecologically damage their habitat when they reach 20 deer per square mile. In the majority of our parks, the deer herds have much greater densities than this.
- Your harvest information is very important to us. Please submit your data accurately. Have a safe and successful hunt.

Holts Landing 2023-24, Updated 6/5/2023



Holts Landing State Park Hunting Map 2023-24

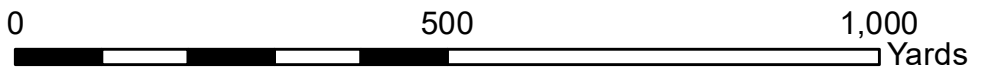


2022 Aerial Photo

State of Delaware, Sanborn Map Company, Inc.

Legend

- Archery Only Stand
- Archery Zone
- Trail
- Stand Trail
- Parking
- Park Boundary



Trap Pond State Park

2023–24 Hunting Seasons/Hunting Rules

Refer to map on other side for approximate locations of indicated areas.

1. In addition to the Rules and regulations found in the “Delaware Hunting and Trapping Guide: 2023-2024” specific rules that apply to Trap Pond State Park are listed below. **Registration of all hunters participating in the Delaware State Park Hunting Program is required. There is an annual \$10 hunting program charge. This charge is waived for Delaware hunters 65 or over.** Hunters may register at the Trap Pond State Park Office or at any Delaware State Park where hunting is permitted.
2. General State Park Hunting Rules
 - a. There is **No Sunday Hunting** in Delaware State Parks
 - b. Failure to comply with any state laws, rules, regulations, and/or policies may result in arrest and/or suspension of all hunting privileges in Delaware State Parks.
 - c. Handguns, rifles with straight-walled pistol-caliber ammunition and Sharps rifles are not permitted for deer hunting in Delaware State Parks.
 - d. It is illegal to use or build a nailed or permanent tree stand or ladder. Portable stands must be of a type that will not damage trees. **Unattended stands will be confiscated.**
 - e. Use of trail cameras in Delaware State Parks is prohibited.
 - f. Driving deer into and/or through hunting areas is prohibited.
 - g. The clearing/cutting of vegetation to form shooting lanes or for any other purpose is prohibited.
 - h. Use of Bait/salt blocks is prohibited in Delaware State Parks.
 - i. Use of buckshot is prohibited in Delaware State Parks.
 - j. Hunting within 50 yards of any trail is prohibited.
 - k. Driving motorized vehicles off-road into fields, woods, or along trails is prohibited. No motorized hand carts or ATVs are allowed to recover harvested deer. E-bikes may be used on state park trails that allow bicycles. Bicycles, including E-bikes may not be ridden on paths from state park trails to the deer stand, pin or archery zone. Manual deer carts are authorized for use.
 - l. Park only in designated parking areas (refer to map for approximate locations).
 - m. State Parks are carry-in, carry-out areas. Please take any trash you accumulate with you.
3. Small Game Hunting
 - a. Use of archery equipment, .22 caliber rifles and shotguns is permitted for hunting Gray Squirrel, Cottontail Rabbit and Bobwhite Quail in-season, in Zone C, G and Zone I from October 8, 2023 through January 31, 2024 except during ANY deer firearm season.
4. Deer Hunting – Archery/Crossbow Seasons
 - a. Permitted in any area labeled as Zone A and B from September 1, 2023 through January 31, 2024.
 - b. Also permitted in Zones C, D, E, F,G, I, J and T; from September 1, 2023 through January 31, 2024.
 - c. Archery hunting is only permitted from provided wooded stands in Zones C, D and E during firearm seasons.
 - d. Hunters must wear hunter orange when archery hunting during any deer firearm season in all zones including Zone A.
5. Deer Hunting – Muzzleloader Seasons
 - a. Permitted in Zones C, D, E, F, G, I, J and T, October 6 - 14, 2023; January 22 - 27, 2024.
 - b. Hunting in Zones C, D and E is only permitted from the provided wooden stands only during gun seasons. A tag board is located near the Bethesda Church restrooms on Wooten Road. Tags for stands are available on a first-come/first-served basis. Tags may not be pulled before 5:00 am. Place the tag on the dashboard of your vehicle while hunting. Tags must be returned to the board if you vacate the stand for any reason. Please enter the required information on the sign-in/sign-out sheet located in the box on the tag board. Information provided on this form helps us better analyze our state park hunting program.
 - c. Saturday hunting during October will not be permitted on October 7 or October 14 in Trap Pond State Park.
 - d. Muzzleloaders may also be used during General Firearm Seasons (see below).

6. Deer Hunting – General Firearm Seasons
 - a. Permitted in Zones C, D, E, F, G, I, J and T, October 16, 20, 22, 27 28 and 30, 2023, November 10 -18, 2023, December 9 -16, 2023 Special Antlerless and January 13 - 21, 2024
 - b. Hunting in Zones C, D and E is only permitted from the provided wooden stands only during gun seasons. Tags for stands are available on a first-come/first-served basis. Tags may not be pulled before 5:00 am. Place the tag on the dashboard of your vehicle while hunting. Tags must be returned to the board if you vacate the stand for any reason. Please enter the required information on the sign-in/sign-out sheet located in the box on the tag board. Information provided on this form helps us better analyze our state park hunting program.
 - c. There is no gun hunting in Trap Pond State Park prior to the October muzzleloader season.

7. Thirteen deer stands are located in Zones C, D, and E (refer to map for locations) to increase hunter safety and convenience. Use of these stands is on a first come/first serve basis and is mandatory during gun seasons. Stand #2 located on the south side of Wooten Road in Area E and #13 on the north side of Pepperbox Road are accessible stands designed for hunters with mobility issues. Tags for stands are available on a first-come/first-served basis. Tags may not be pulled before 5:00 am. Place the tag on the dashboard of your vehicle while hunting. Tags must be returned to the board if you vacate the stand for any reason. Please enter the required information on the sign-in/sign-out sheet located in the box on the tag board. Information provided on this form helps us better analyze our state park hunting program.

8. Access - Hunters may not cross private property without permission from the land owner.
 - a. Parking for Area A is located on Wooten Road at the Dog Training Area. **Parking within the main park to hunt is prohibited.**
 - b. Access to Zone G is directly from Arvey Road.
 - c. Hunters must access Zone J directly from adjacent public roads only.
 - d. Access to Zone J on the east side of Hitch Pond Road is only from the forest that is owned by Delaware State Parks. **Do not cross the privately owned fields adjacent to park property for any reason.**

9. All deer harvested in Trap Pond State Park must be reported via the on-line or toll-free telephone reporting system as required by the Delaware Division of Fish and Wildlife. Deer should be reported as follows:

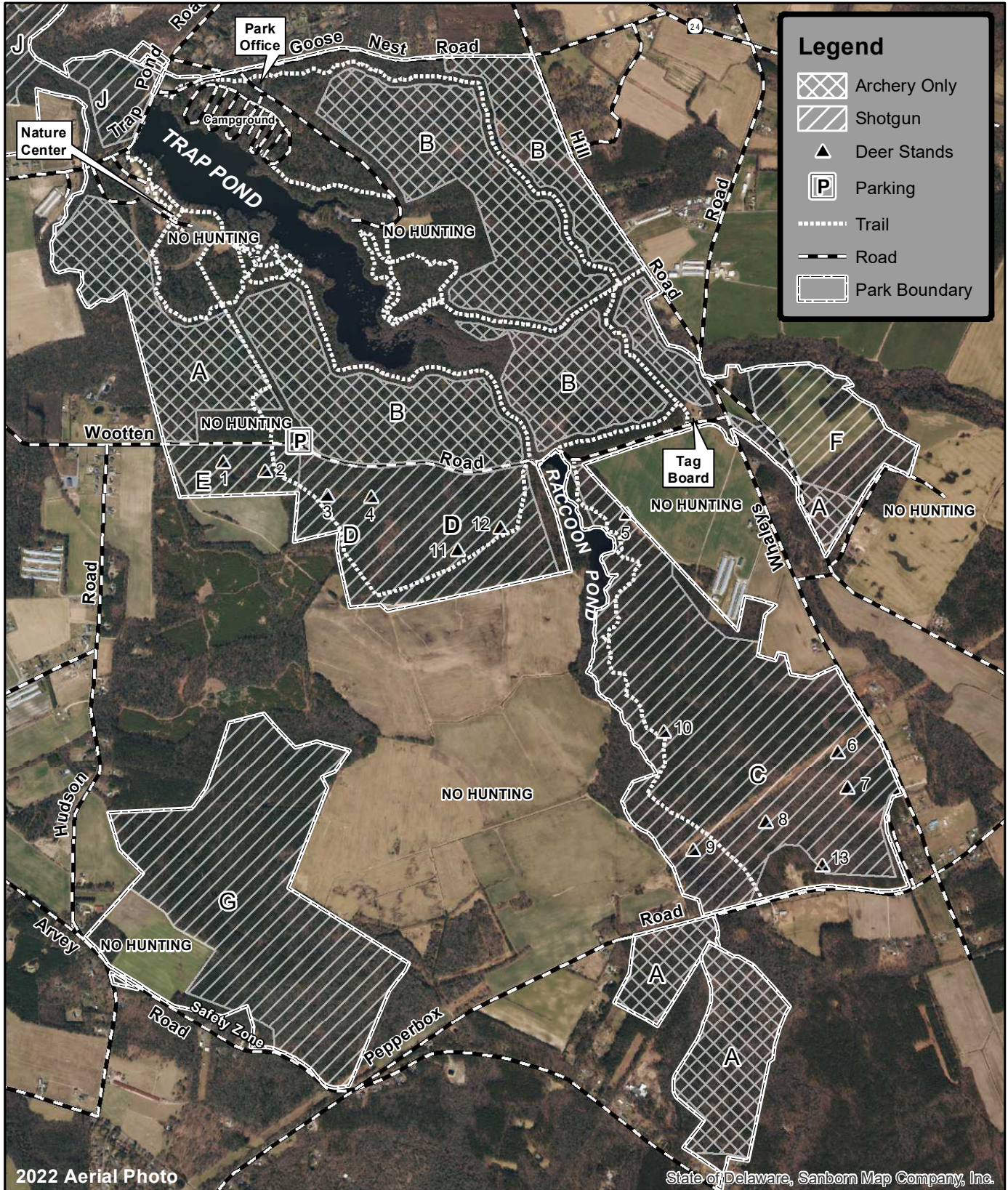
Land Type:	Public
County:	Sussex
Zone:	16 (14 for tract on north side of RT 24)
Location Type:	State or County Park
Location Description:	Trap Pond State Park

10. Dependent upon ongoing construction, weather, or other factors, one or more areas may be closed. For updated or additional information, contact the park office at (302) 875-5153 or visit the Delaware State Parks website at www.destateparks.com.

11. Please be careful, discrete and considerate around other park visitors. Understand that many park patrons are NOT hunters and some may feel threatened by your presence. Have a safe and successful hunt.



Trap Pond State Park Hunting Map 2023-24 (Zones A-G)

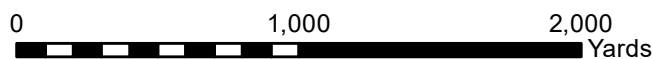


Legend

- Archery Only
- Shotgun
- Deer Stands
- Parking
- Trail
- Road
- Park Boundary

2022 Aerial Photo

State of Delaware, Sanborn Map Company, Inc.



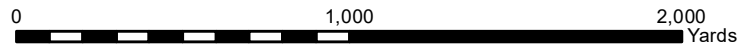


Trap Pond State Park - Hunting Map 2023-24 (Zones I & J)



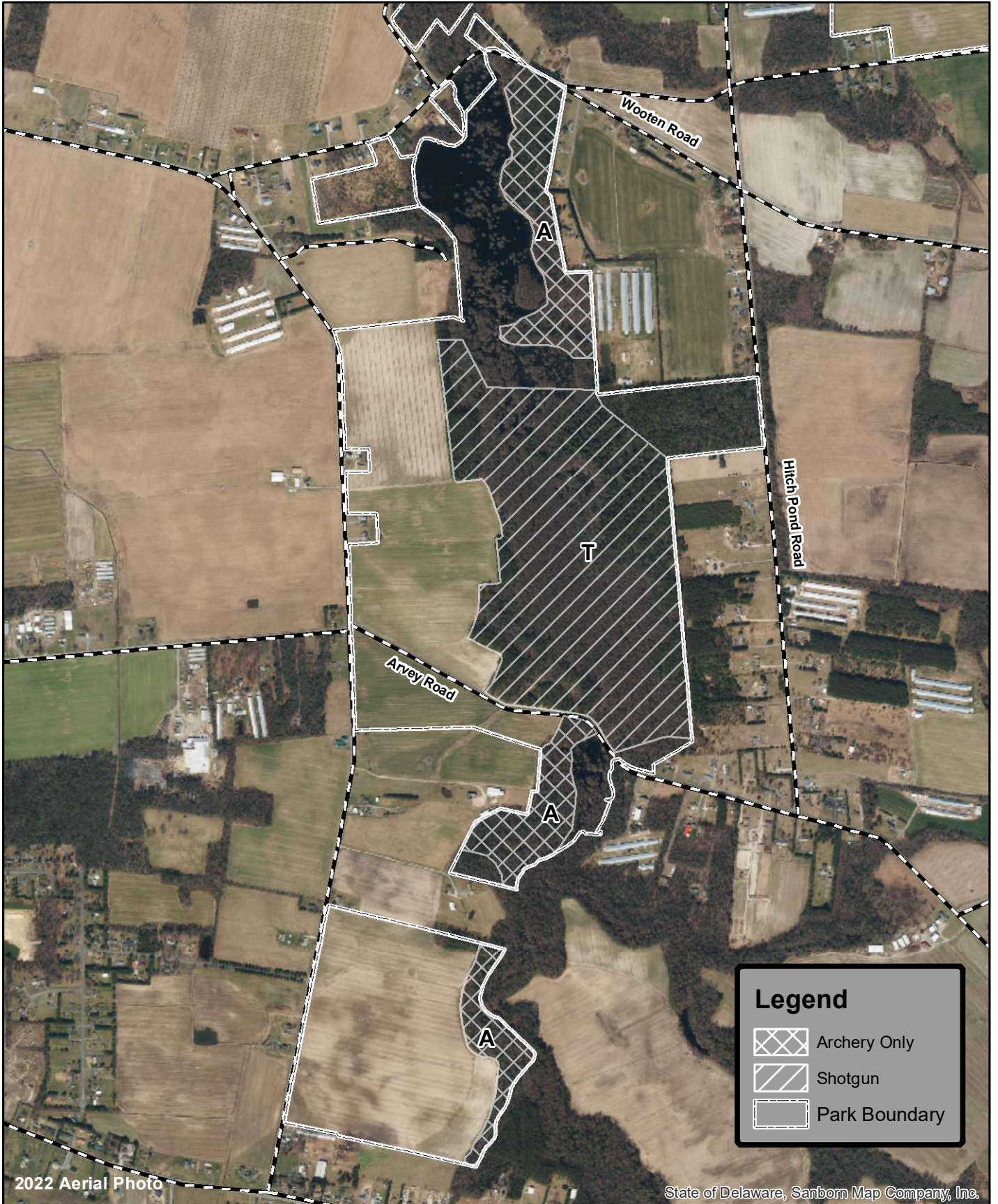
2022 Aerial Photo

State of Delaware, Sanborn Map Company, Inc.





Trap Pond State Park Trussum Pond Hunting Map 2023-24

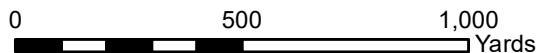


Legend

- Archery Only
- Shotgun
- Park Boundary

2022 Aerial Photo

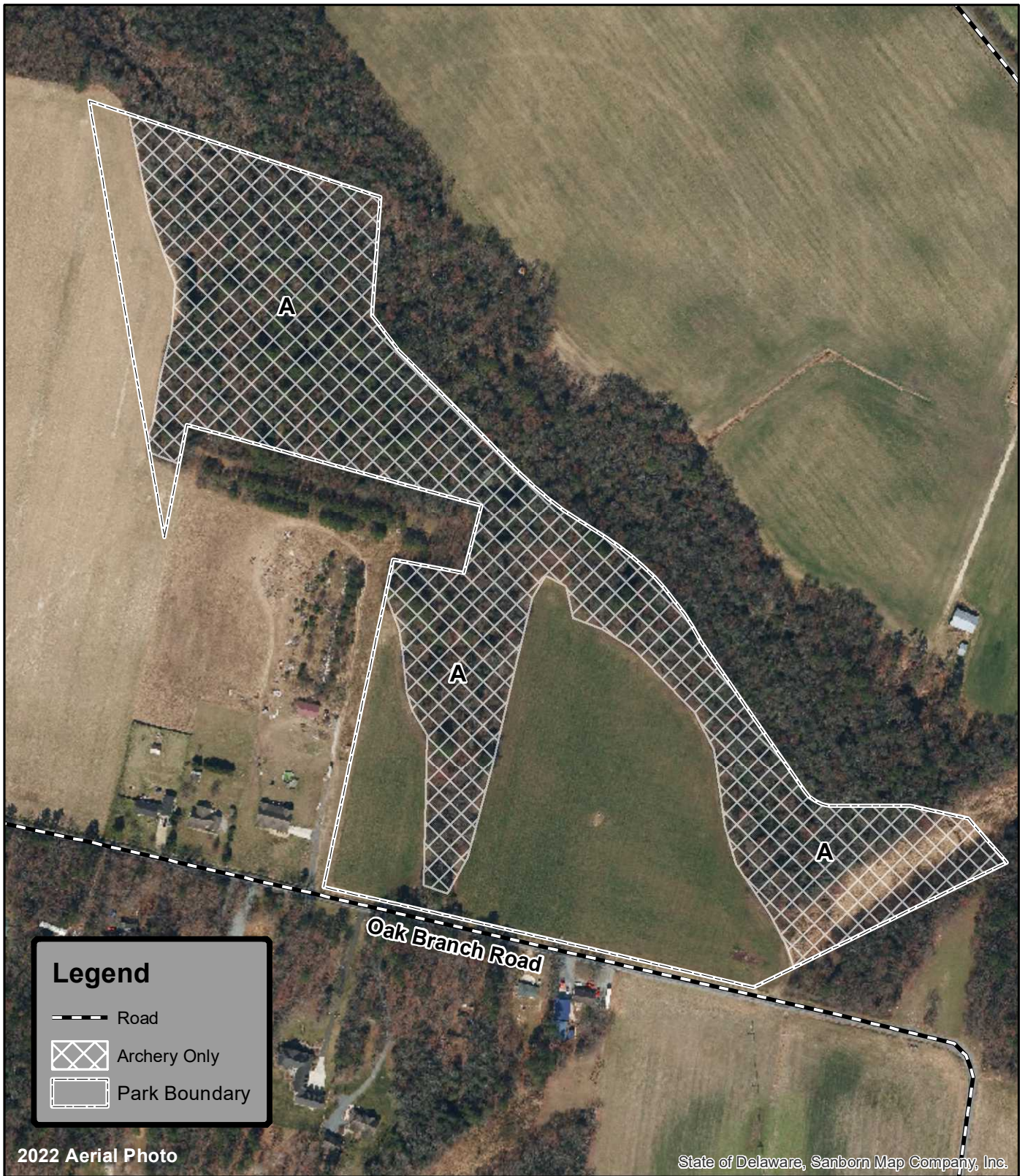
State of Delaware, Sanborn Map Company, Inc.





Trap Pond State Park

Morris Branch Tract Hunting Map 2023-24



Updated May 5, 2022
Environmental Stewardship Program
Division of Parks & Recreation

