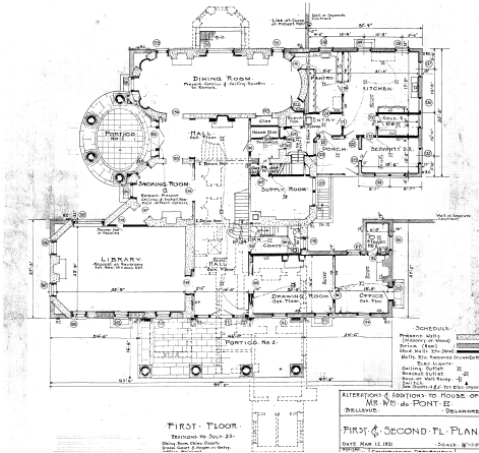


Architectural Historian Internship

Dover Headquarters (Any/All Parks)

DELAWARE STATE PARK INTERNSHIP PROGRAM



CLICK HERE TO APPLY: [Delaware State Parks Internship Program Application](#)

DESCRIPTION

Help us to preserve the architectural history of Delaware State Parks! In this position you will get hands-on field experience working alongside the State Parks Archaeologist with historical research and architectural surveys throughout the state. This Internship position will strengthen the candidate's knowledge of architectural styles and history, but also conducting architectural surveys and recording architectural/historical sites. Interns will also assist staff with educational programs, public events, and fieldwork as needed.

LOCATION

The main office where the Archaeologist is located is the Richardson and Robbins Building in Dover, DE. However, this internship can take place at any of the State Parks.

TERM OF SERVICE

Minimum of 3 months up to Year-Round
Minimum 15-20 hours – Maximum 30+ hours/ week

RESPONSIBILITIES

- Assisting in architectural surveys
- Recording sites and writing site forms
- Assisting with historical research
- Assisting with the digitization (scanning) of project records
- Assisting with public programs

REQUIRED SKILLS

- Must be able to work flexible hours, including a weekends and holidays
- Interest in architecture or architectural history
- Archaeology, Architecture, or other history-related course work desirable
- Ability to work independently and follow provided instructions
- Attention to detail
- Professional appearance and demeanor, responsible and trustworthy
- Pleasant and personable, enjoys people, good communication skills
- Ability to work both indoors and outdoors in varied weather conditions

DIRECT SUPERVISOR

The direct supervisor will be DE State Parks Cultural Preservation Specialist and Archaeologist.

BENEFITS

- **Training:** A hallmark of the program, interns receive training from the field experts they will be working with. Includes Seasonal Interpreter Training and FA/CPR. In addition to this formal and informal training to successfully conduct their internship assignment, interns will have the opportunity to build associated skills and share real-time experience with park staff and colleagues. Training will be made available to the interns to further their personal and professional development.
- **Housing:** Limited co-ed housing is available, at no fee, for interns providing full-time hours (30 or more per week). If selected for housing, an intern will share a house, duplex or dorm facility with other interns.
- **Activities:** Interns will have the opportunity not only to visit ALL Delaware State Parks at no fee, but also participate in many of the tours, programs, and associated events for free. Delaware State Parks span the length of the state and whether it be canoeing at Trap Pond State Park, surfing at Delaware Seashore State Park, attending a concert at Bellevue State Park, or touring the living history facility at Fort Delaware, there is certainly something for everyone.
- **Stipend Available:** Interns are not employees of the State of Delaware- they are considered volunteers and are not paid for their service. Interns may elect to receive a stipend to help cover expenses incurred during their volunteer intern service. The stipend is a fixed amount of \$100 per week for service of 30 or more hours per week or \$50.00 per week for service of between 20 – 29 hours/ week paid biweekly as a direct deposit into the Intern's bank account.
 - The stipend is not a wage, but does count toward the total income on which the intern's tax obligation is based. Interns electing to receive the stipend will complete IRS Form W-9 Request for Tax-Payer Identification as self-employed and will receive a Form 1099 at the end of the year that reports the amount of income from the stipend. No taxes are withheld from the stipend.

All Delaware State Parks Interns are required to undergo and successfully complete a background check performed by the Division.

TO APPLY: [Delaware State Parks Internship Program Application](#)



The Department of Natural Resources and Environmental Control is committed to affirmative action, equal opportunity, and the diversity of its workforce