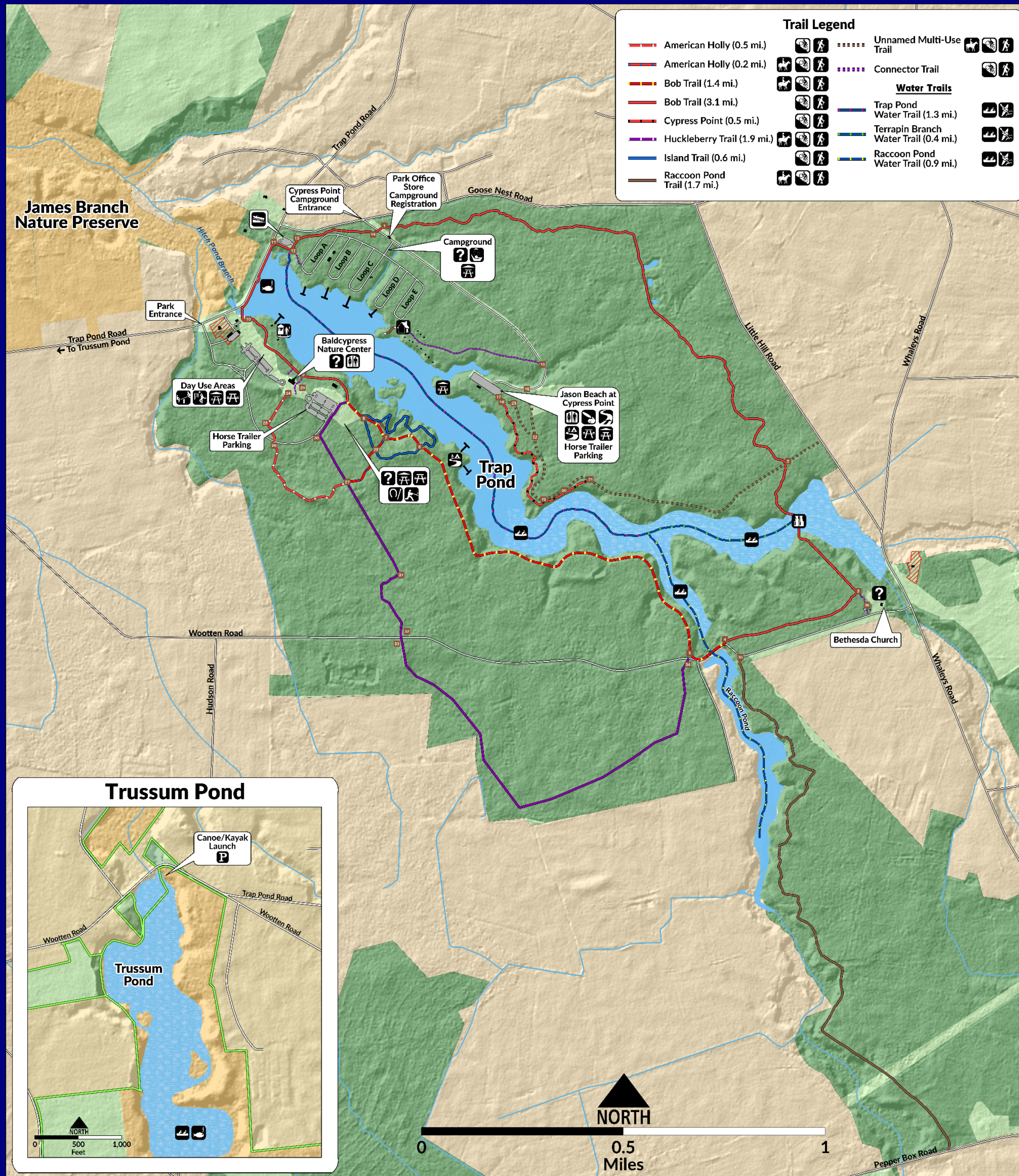
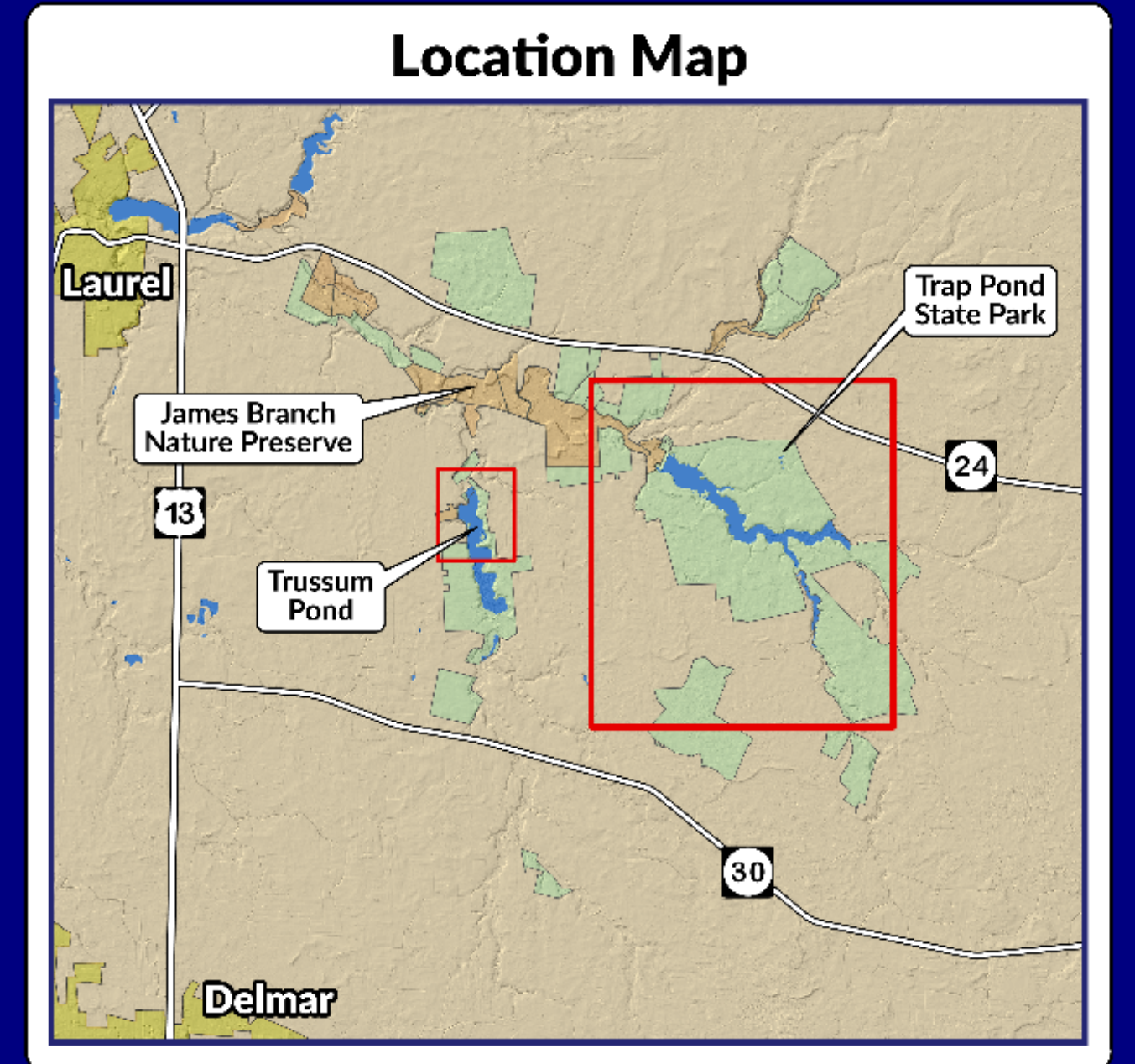


TRAP POND STATE PARK MAP

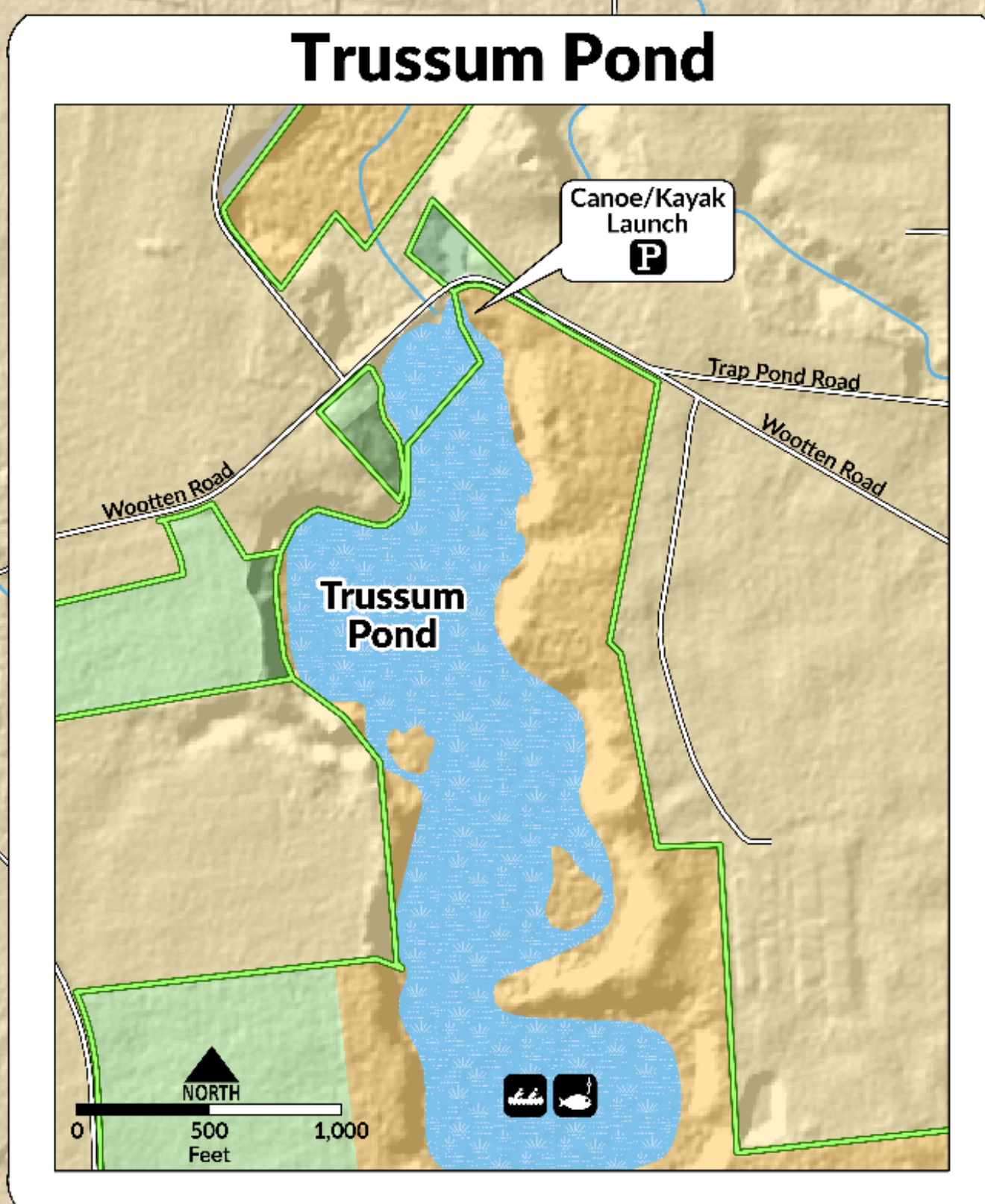


Trail Legend	
American Holly (0.5 mi.)	Unnamed Multi-Use Trail
American Holly (0.2 mi.)	Connector Trail
Bob Trail (1.4 mi.)	Water Trails
Bob Trail (3.1 mi.)	Trap Pond Water Trail (1.3 mi.)
Cypress Point (0.5 mi.)	Terrapin Branch Water Trail (0.4 mi.)
Huckleberry Trail (1.9 mi.)	Raccoon Pond Water Trail (0.9 mi.)
Island Trail (0.6 mi.)	
Raccoon Pond Trail (1.7 mi.)	

Trap Pond State Park



Legend		
State Park Land	Parking	Trail Head
Forested Park Land	Restrooms	Fishing
James Branch Nature Preserve	Showers/Bath House	Boat Launch
Water	Picnic Pavilion	Boat Rental
Baldcypress Swamp	Picnic Area	Canoeing
Restricted Area	Baseball Field	Cabins
Building	Horseshoes	Primitive Youth Camping
Parking	Playground	Scenic Overlook
Piers	Volleyball	Disc Golf
Navigation Markers	Information	



About the Park ...
 Trap Pond is an enchanting place to hike, fish, camp or picnic. A canoe trek will bring you face to face with abundant wildlife, wildflowers, and the northern most stand of baldcypress trees in the United States. The campground is nestled along the pond's northern shore under a forested canopy of hardwoods. Rent a cabin or a yurt, a 16-foot diameter circular tent set on a wooden platform - great for the new camper!

About the Trails ...

American Holly Trail: (Some Portions Closed to Horseback Riding)
 The trail follows a gentle grade making it suitable for all levels of hiking and biking fitness. It joins with the Bob Trail to form a loop.

Bob Trail: (Some Portions Closed to Horseback Riding)
 The Bob Trail is named after former Delaware State Senator Robert Venables, Sr. A native of Sussex County, Robert or "Bob" was a dedicated supporter of Delaware State Parks and a frequent visitor to Trap Pond State Park during his 16 years in the State Senate. The Bob Trail loops around Trap Pond linking the Day Use Area, Campground and Baldcypress Nature Center. Trail users will witness abundant wildlife, wildflowers, baldcypress trees, and fresh water wetlands.

Island Trail:
 This short loop trail meanders along the pond's edge over a packed earth surface. The trail connects with the American Holly and Bob Trails and is suitable for all levels of hiking and biking fitness.

Park Information
 Park Office: (302) 875-5153 Nature Center: (302) 875-5163
 Campground Reservations: (877) 987-2757
www.destateparks.com



June 2022